



---

# Census 2020 and Redistricting in Texas: Dallas - Fort Worth Regional Hearing

Senate Redistricting Hearing

February 4, 2021

 @TexasDemography



---

## Census 2020

- Census counts used to reapportion the U.S. House of Representatives, determining how many seats each state gets.
- Census counts used by state officials to redraw congressional and state legislative boundaries to account for population shifts.
- Census derived data are used to allocate over \$1.5 trillion in federal funds to support healthcare, education, transportation, and other service programs.



---

## Redistricting Dates

- Apportionment File sent to POTUS on ~~12/31/2020~~ now by 4/30/2021
- Redistricting Data File (Public Law 94-171 File) received by the Governor no later than ~~April 1, 2021~~ now after July 31, 2021
- PL 94-171 released to states in groups of 8 states per week, with one week prior notice
- PL 94-171 File to include:
  - Race, Hispanic origin, 18 and older, occupancy status, and group quarters by type.
- Data available at [WWW.CENSUS.GOV/RDO](http://WWW.CENSUS.GOV/RDO)



## Population Growth and Projected Congressional Seats of Select States

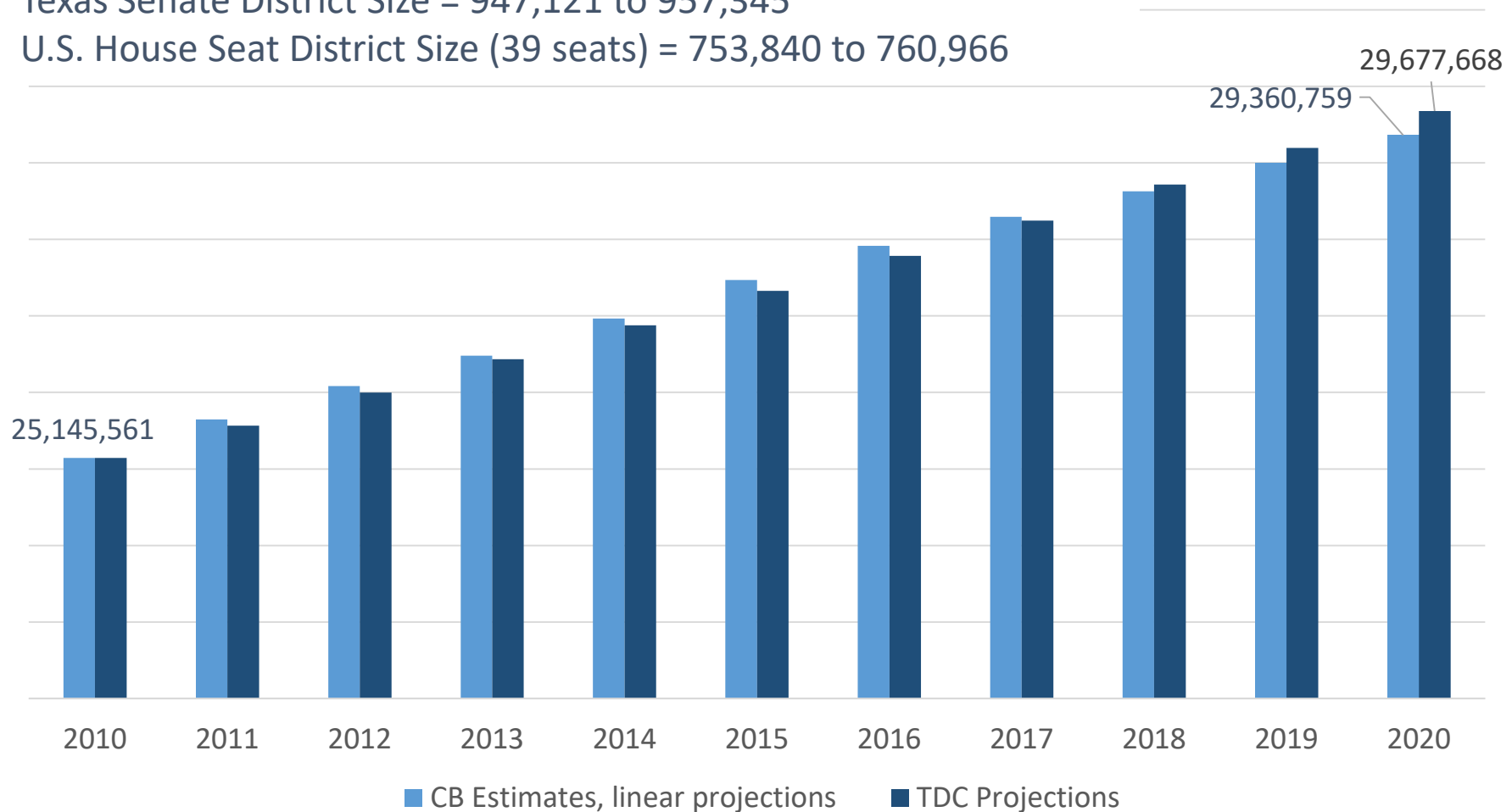
	2010 Population	2020 Population	Numeric Change 2010-2020	Percent Change 2010-2020	Projected Congressional Seats Added
United States	308,745,538	329,484,123	20,738,585	6.7%	
<b>Texas</b>	<b>25,145,561</b>	<b>29,360,759</b>	<b>4,215,198</b>	<b>16.8%</b>	<b>3</b>
Florida	18,801,310	21,733,312	2,932,002	15.6%	2
North Carolina	9,535,483	10,600,823	1,065,340	11.2%	1
Arizona	6,392,017	7,421,401	1,029,384	16.1%	1
Colorado	5,029,196	5,807,719	778,523	15.5%	1
Oregon	3,831,074	4,241,507	410,433	10.7%	1
Montana	989,415	1,080,577	91,162	9.2%	1
California	37,253,956	39,368,078	2,114,122	5.7%	-1
Minnesota	5,303,925	5,657,342	353,417	6.7%	-1



# Linear Forecast of Census Bureau Population Estimates 2010-2020 and TDC Population Projections

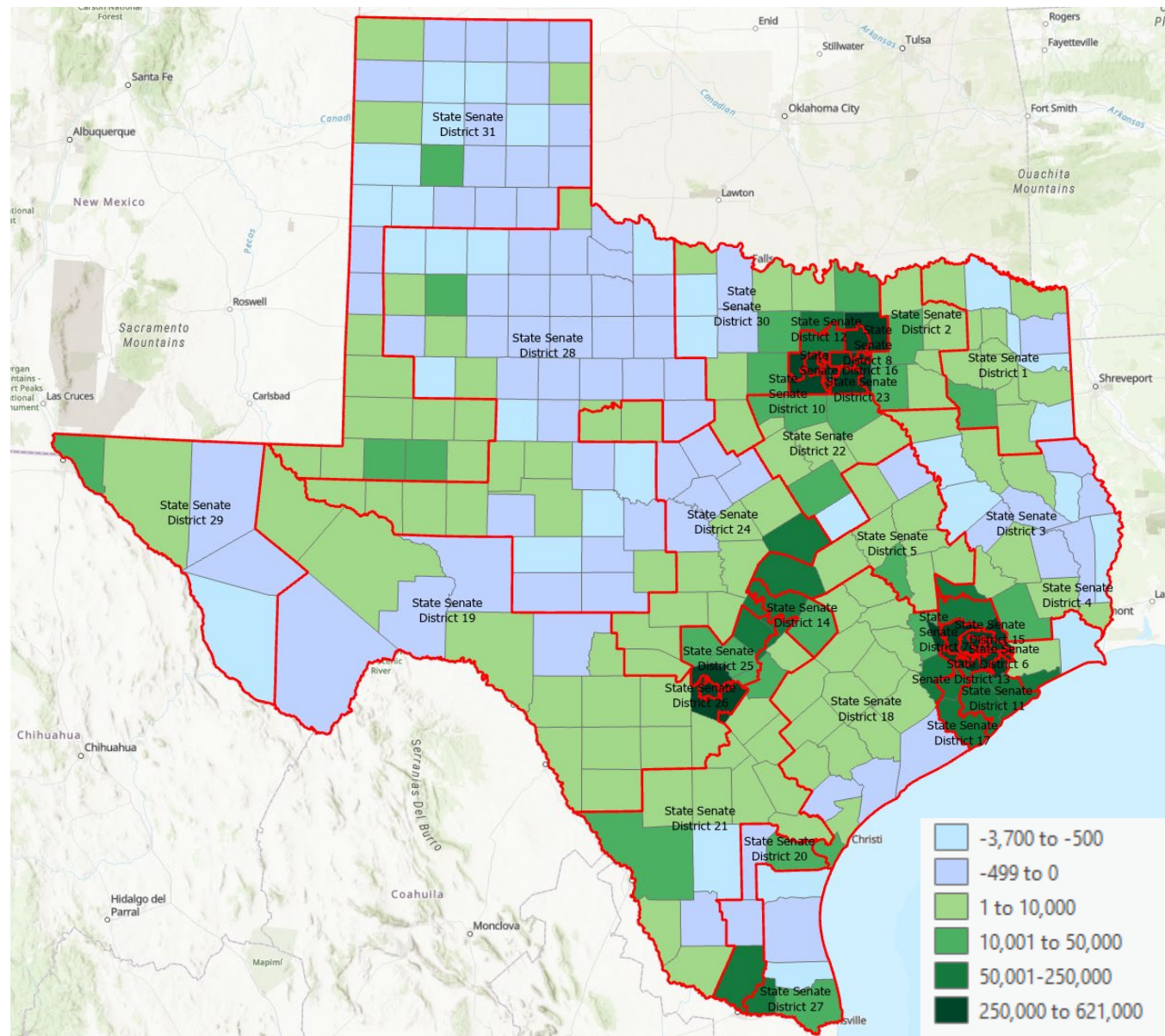
Texas Senate District Size = 947,121 to 957,345

U.S. House Seat District Size (39 seats) = 753,840 to 760,966





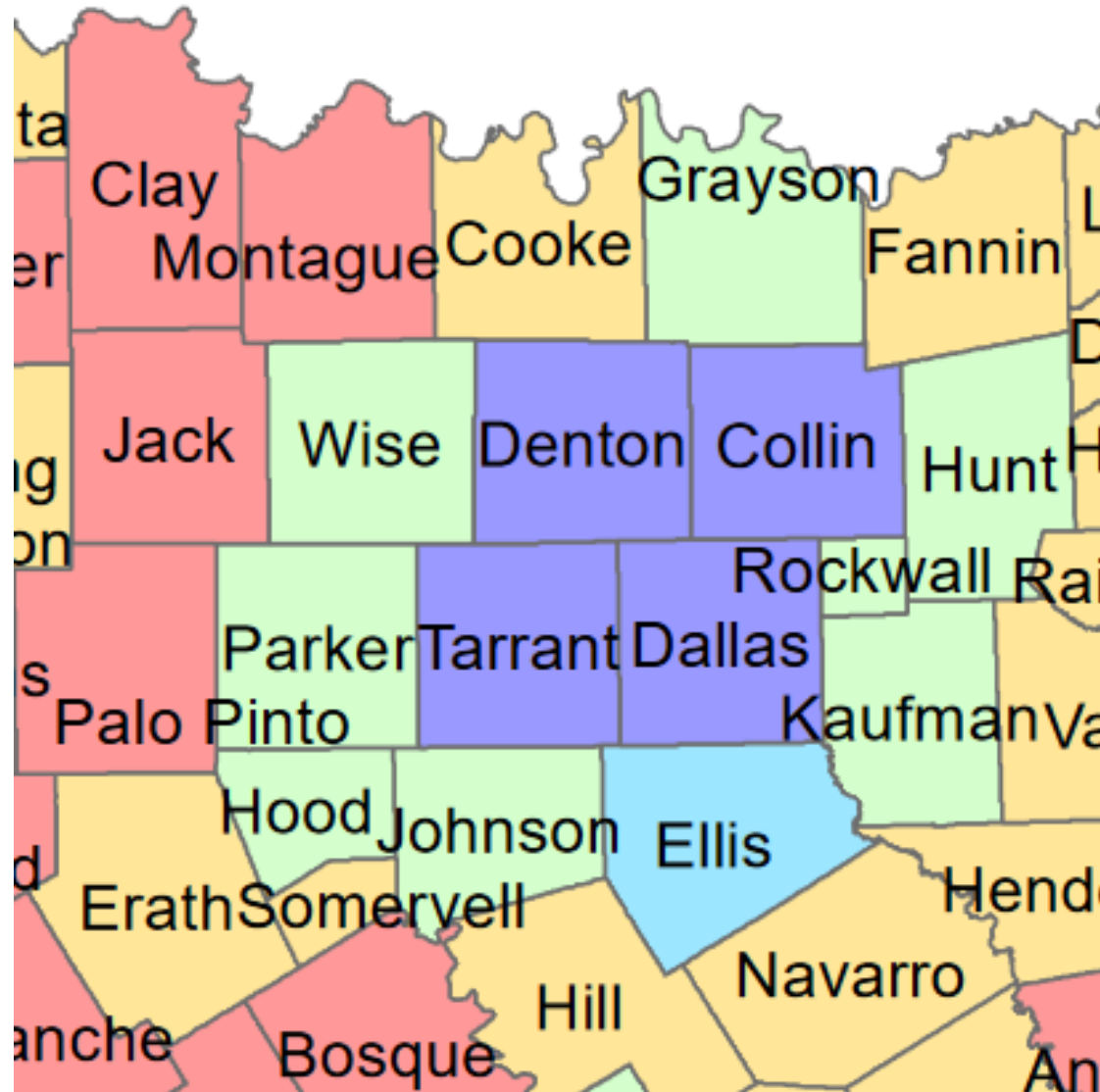
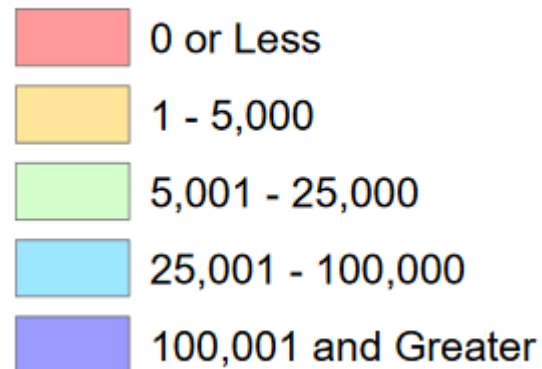
# Numeric population change 2010-2019, Texas Counties with Current Texas Senate Districts





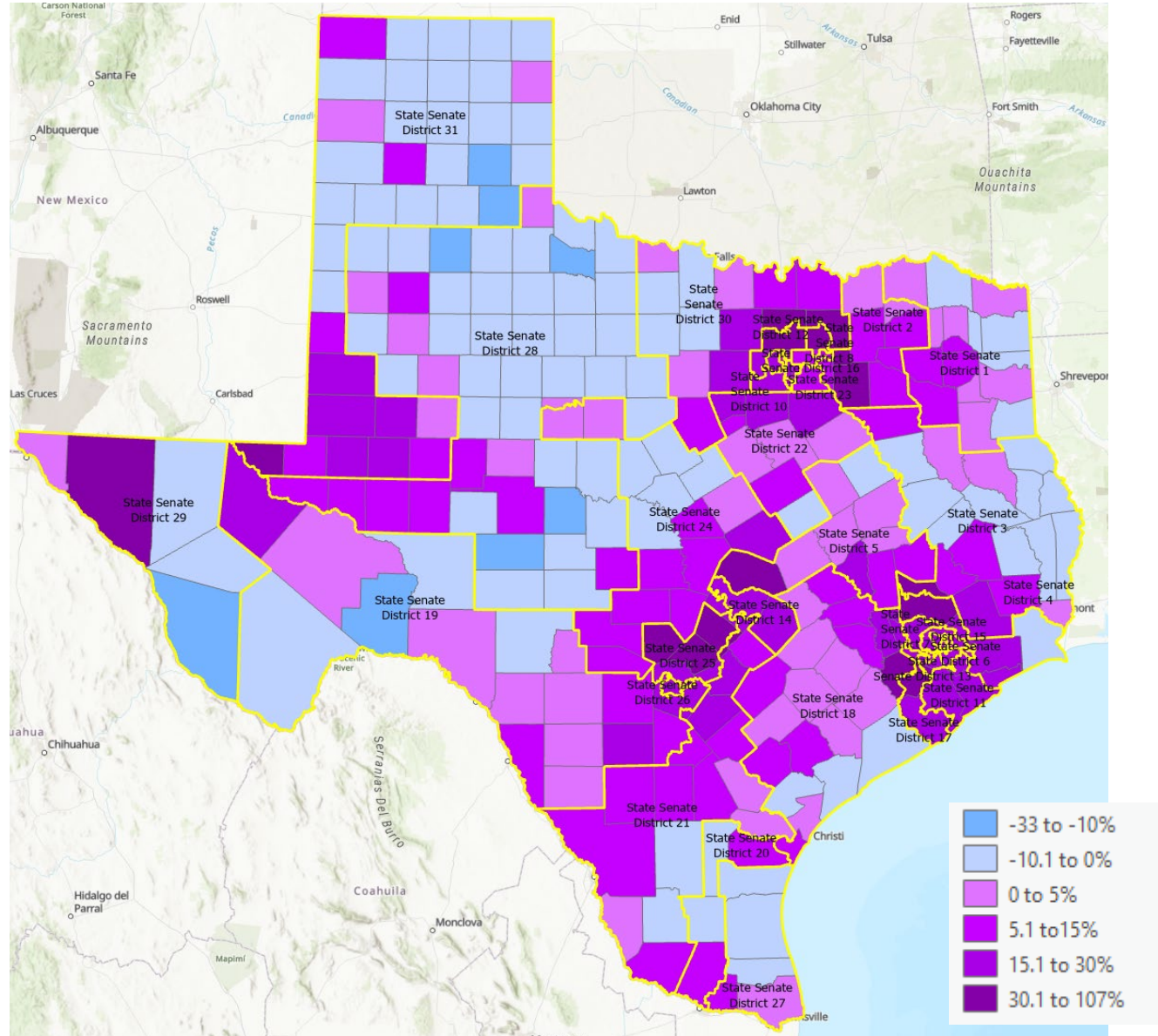
# Projected Numeric Change in Texas Counties between 2010 and 2020

## Projected Numeric Change





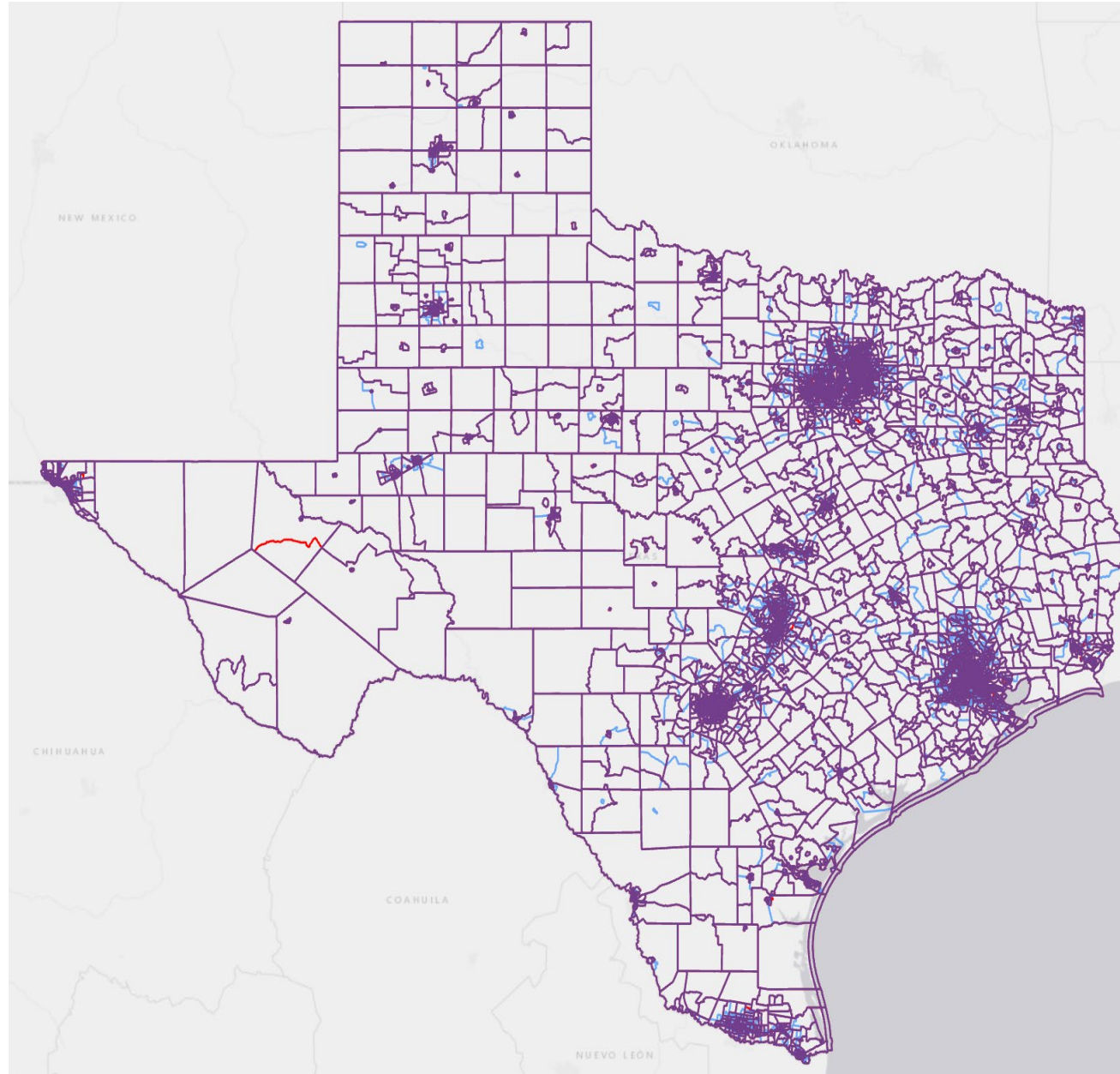
# Percent population change 2010-2019, Texas Counties with Current Texas Senate Districts





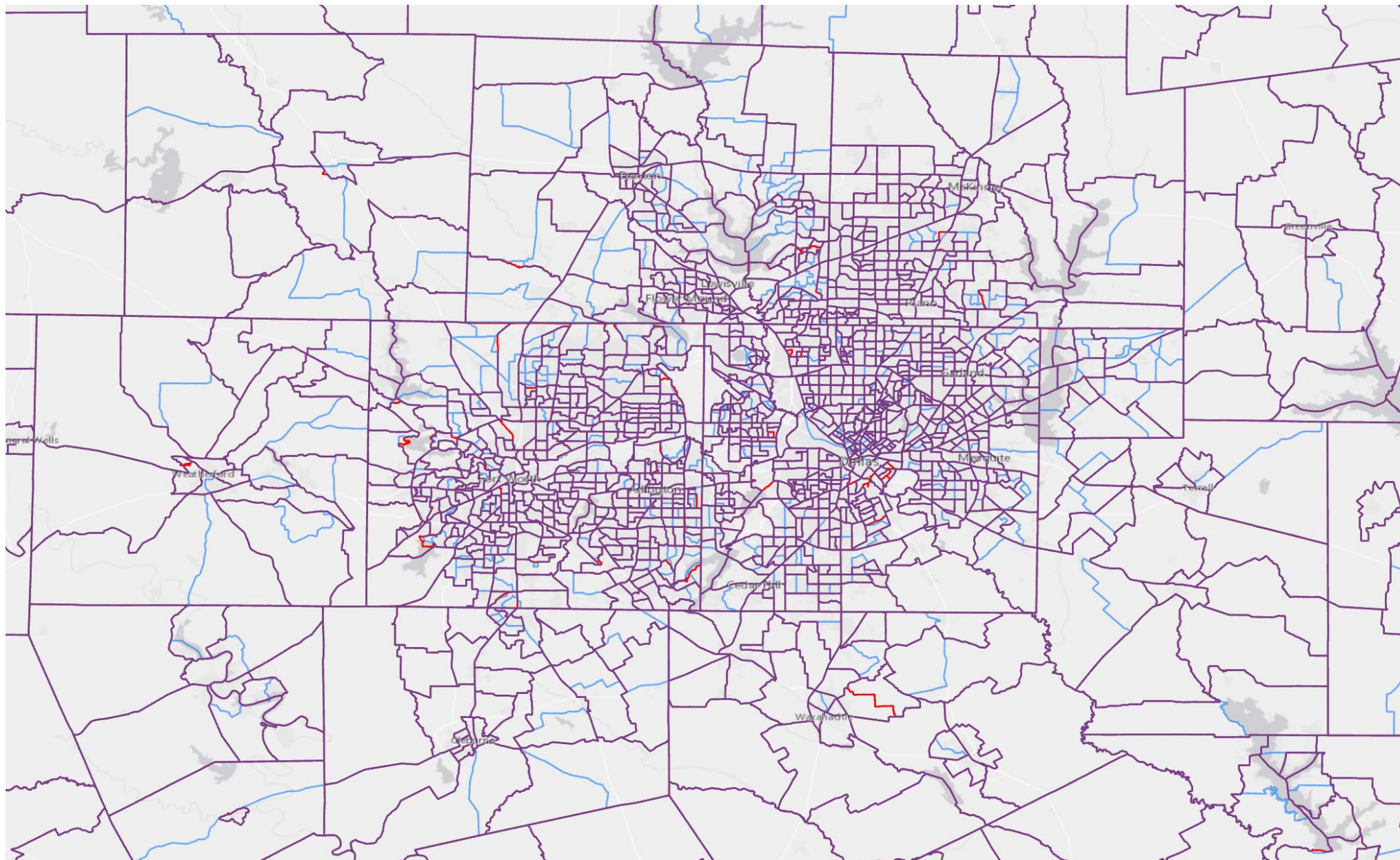


# 2010 Census Tracts (Red/Purple) and Proposed Census Tract Splits (Blue) for 2020



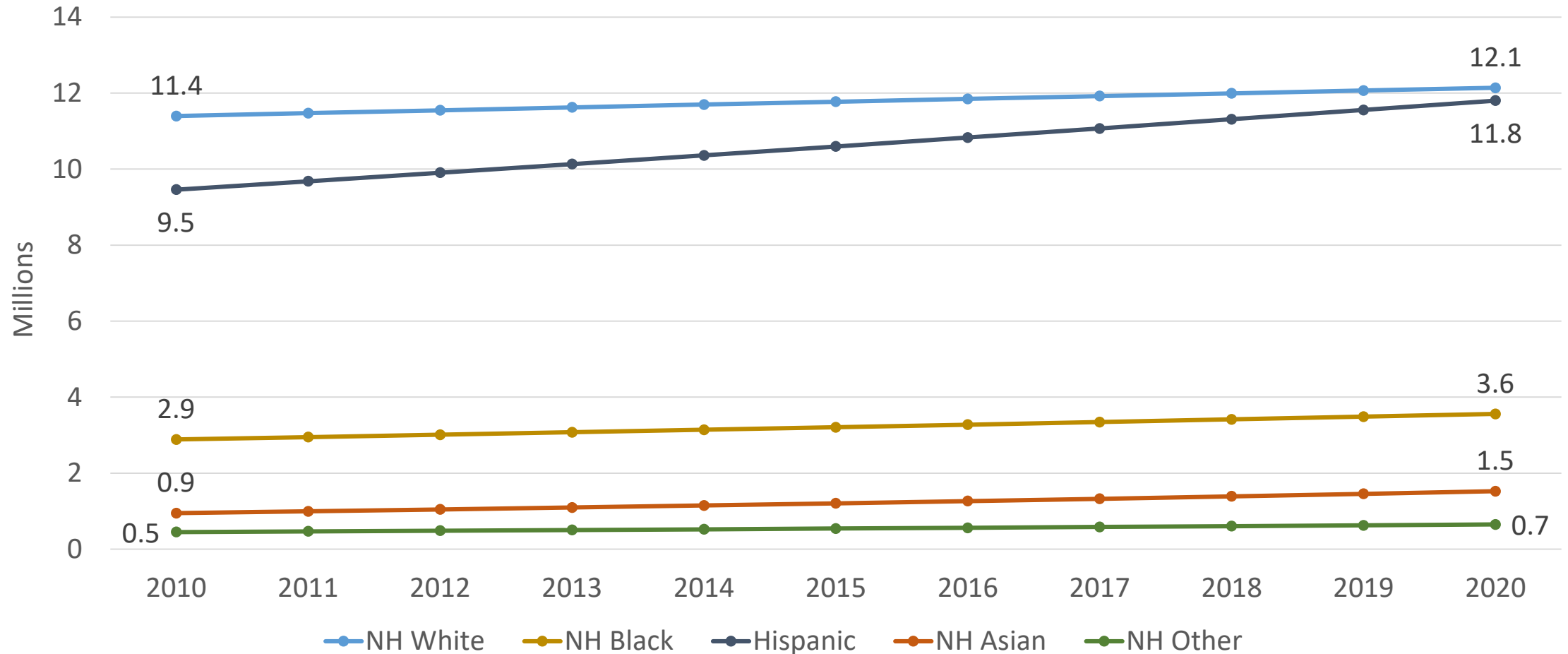


# 2010 Census Tracts (Red/Purple) and Proposed Census Tract Splits (Blue) for 2020, Dallas-Fort Worth Area



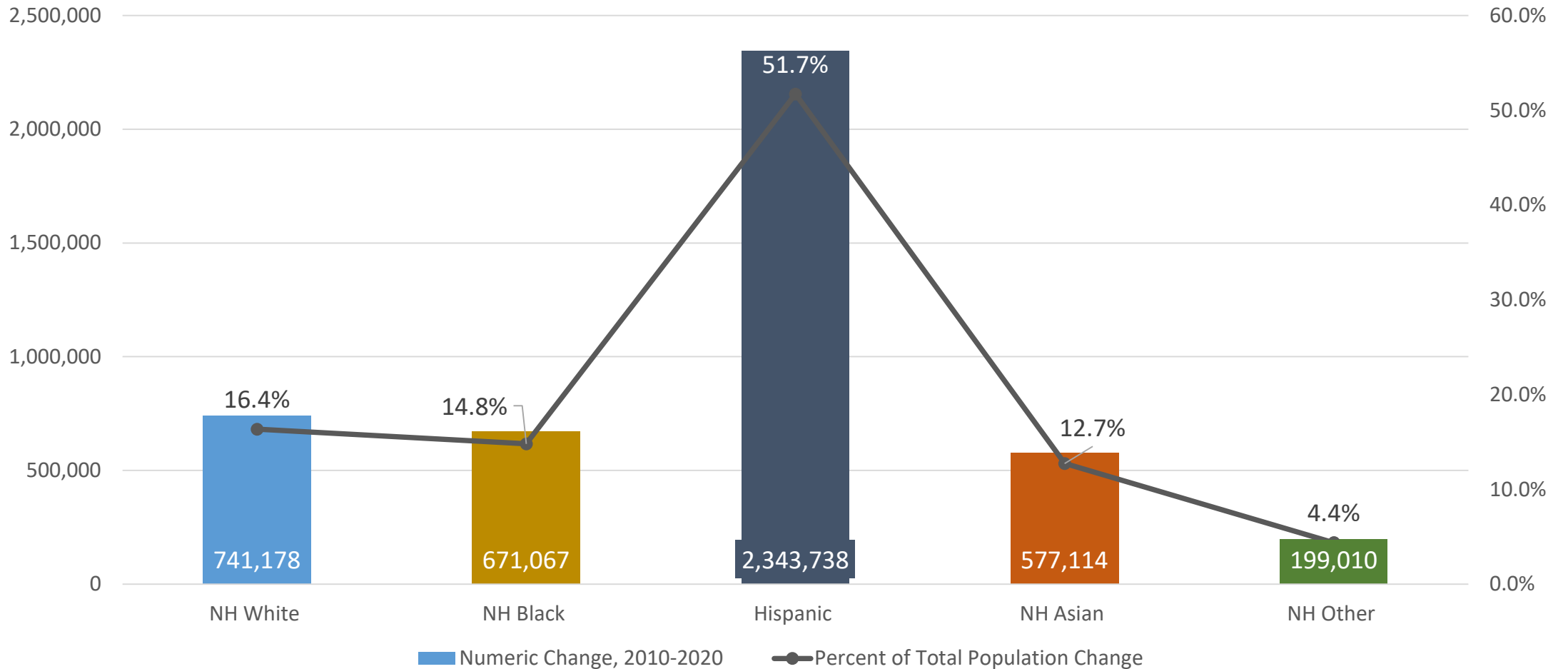


## Projected Population by Race and Ethnicity, Texas 2010-2020





## Projected Population Change and Percent of Total Projected Change by Race/Ethnicity, 2010-2020, Texas





# Texas Demographic Center Redistricting Resources

[Home](#) > [Data](#) > [Decennial](#) > [2020](#) > [Redistricting Resources](#)

[Tx Pop. Projection & Estimates](#) | **Census 2020** | [Census 2010](#) | [Census 2000](#) | [Census 1990](#) | [Descriptive Tables](#)

[Making Texas Count](#) | [Self Response Reports](#) | [Redistricting Resources](#)

Every ten years, the country conducts a census to count every person in the United States. Census counts are used by state and local officials to redraw congressional, legislative, and local boundaries to account for population shifts. TDC has prepared the following data products to serve as a resource for legislators, stakeholders, and others interested in the Texas redistricting process.

**State Level**

- Slide deck including Texas demographic trends, projections, important Census dates, and other relevant information. [PPTX \(3.8 MB\)](#) [PDF \(1.7 MB\)](#)
- Maps of Numeric and Percent Change between 2010 and 2020 in Texas counties. [PDF \(1.4 MB\)](#)

**District Level: Maps and Tables of 2010 Population, 2020 Projected Population Change**

Maps contain the numeric and percent change in Texas counties by Senate district. Tables contain the population and projected change by race/ethnicity for counties that are part of the district.

District Reports			
Texas Senate District (PLANS172)	Population Change Maps	Population Change Tables	Population Change Narrative
District 01	<a href="#">[PDF] (1.5 MB)</a>	<a href="#">[PDF] (68 KB)</a>	<a href="#">[PDF] (78 KB)</a>
District 02	<a href="#">[PDF] (1.6 MB)</a>	<a href="#">[PDF] (65 KB)</a>	<a href="#">[PDF] (78 KB)</a>
District 03	<a href="#">[PDF] (2.1 MB)</a>	<a href="#">[PDF] (66 KB)</a>	<a href="#">[PDF] (78 KB)</a>
District 04	<a href="#">[PDF] (1.7 MB)</a>	<a href="#">[PDF] (65 KB)</a>	<a href="#">[PDF] (78 KB)</a>

<https://demographics.texas.gov/data/decennial/2020/RedistrictingResc>



# Texas Demographic Center Redistricting Resources

---



Texas Senate District 26, PLANS172

Counties included wholly or partially in Senate District 26: Bexar County.

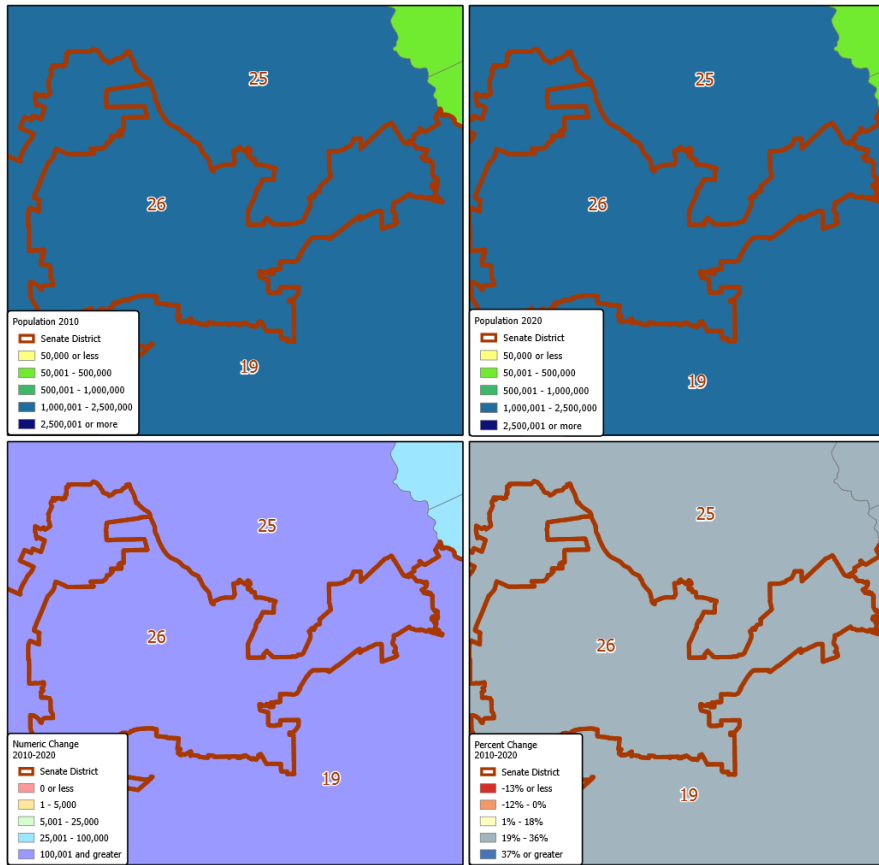
Between 2010 and 2020, Bexar County is projected to grow by over 300,000, with Hispanics driving the bulk of the growth, followed by non-Hispanic (NH) Whites, NH Blacks, NH Asians, and NH Other population groups.

See Population Change [Maps](#) and [Tables](#) for additional information.

<https://demographics.texas.gov/data/decennial/2020/RedistrictingResc>



# Texas Demographic Center Redistricting Resources



**Texas Senate Districts**  
State Senate District 26

## Texas Senate District 26, PLANS172

2010 Population and 2020 Projected Population  
Numeric and Percent Change 2010 to 2020 by County

County	Population Change by Race/Ethnicity 2010 - 2020													
	Population		All Races		NH White		NH Black		Hispanic		NH Asian		NH Other	
	2010	2020	Numeric	Percent	Numeric	Percent	Numeric	Percent	Numeric	Percent	Numeric	Percent	Numeric	Percent
Bexar	1,714,773	2,093,502	378,729	22.09%	43,956	8.47%	35,139	29.66%	260,794	25.90%	24,478	61.87%	14,362	46.83%



Source: Texas Demographic Center, Vintage 2018 Population Projections, 2010-2015 Migration Scenario  
Note: Data for all counties contained wholly or partially within Senate District.



<https://demographics.texas.gov/data/decennial/2020/RedistrictingResc>



# Census Bureau Announces Quality Assessments for 2020 Census

DECEMBER 07, 2020  
RELEASE NUMBER CB20-CN.131

SUBSCRIBE |   

## Census Bureau Continues Practice of Evaluating Decennial Count

**DEC. 7, 2020** – The U.S. Census Bureau announced updated plans for releasing information about quality along with the first results from the census, including releasing an unprecedented number of data quality indicators.

Each decade, the Census Bureau conducts extensive evaluations of the census and releases a variety of data quality metrics. Given the unique challenges that the COVID-19 pandemic posed to the 2020 Census, the Census Bureau plans to release additional data quality metrics.

In addition to upcoming quality metrics planned for release, the Census Bureau will engage in other evaluations of the 2020 Census in the coming months and years, including:

- Working with outside experts to evaluate data quality.
- Conducting extensive evaluations and assessments of 2020 Census operations.
- Comparing the 2020 Census results to other population totals.

All of these efforts support the evaluation of the quality of a census – analyzing the process, reviewing data carefully and comparing the results to other population totals.





# 2020 Census Detailed Operational Plan for: 24. Count Question Resolution Operation (CQR)

MARCH 31, 2020

VERSION: 1.0

PREPARED BY: DECENNIAL CENSUS MANAGEMENT DIVISION

## Operation Purpose

The purpose of the 2020 Census CQR is to provide a mechanism for governmental units (GUs) to request a review of their official 2020 Census results. The 2020 Census CQR is the final operation by which updates to the 2020 Census data can be made. Tribal chairpersons and the highest elected officials (or their representative) from state and local governments in the United States and Puerto Rico can submit a CQR case to request review of the official 2020 Census counts of population and housing, and to correct boundary, geocoding, and certain coverage issues.



[Download Count Question Resolution Operation \(CQR\) \[PDF - 1.6 MB\]](#)



CENSUS BLOGS

[About Census Blogs](#)

[Director's Blog](#)

[Global Reach](#)

[Random Samplings](#)

[Research Matters](#)

[Comment Policy](#)

[Back to Director's Blog](#)



## 2020 Census Processing Updates

February 02, 2021

BY DR. RON JARMIN, ACTING DIRECTOR

SUBSCRIBE



Search this blog

CATEGORIES

ARCHIVES

In keeping with the U.S. Census Bureau's long-established commitment to being entirely transparent in the production of our statistics and data products, I'm writing to provide an update on data processing for the 2020 Census. In every decennial census, we are the first to identify and analyze the quality of our data, including the extent to which we overcount or undercount key population groups in our country. We cannot do this in detail until we complete the Post-Enumeration Survey later this year, however we know a lot already about the accuracy and completeness of our population counts in the 2020 Census. I [blogged](#) with some initial impressions in early November, and we've made a lot of progress since then. But as reported in the media, some issues have surfaced as well. Most of these issues are typical and are similar to those we've encountered in prior decennial censuses. Others are novel to planned improvements for the 2020 Census, and some are related to the difficulties experienced collecting data during the COVID-19 pandemic.

The main consequence of these issues regards the schedule. The Census Bureau takes its constitutional and statutory duties very seriously. Even with the pandemic delaying data collection, we hoped to deliver the state population counts for apportionment by the statutory deadline of Dec. 31, 2020. Even with data collection not ending until mid-October, this was technically possible as long as we didn't encounter any significant processing issues. However, we were also realistic knowing that all prior decennial censuses encountered such issues. We devoted additional



---

# Lloyd Potter



(210) 458-6530



Lloyd.Potter@utsa.edu



demographics.texas.gov



@TexasDemography