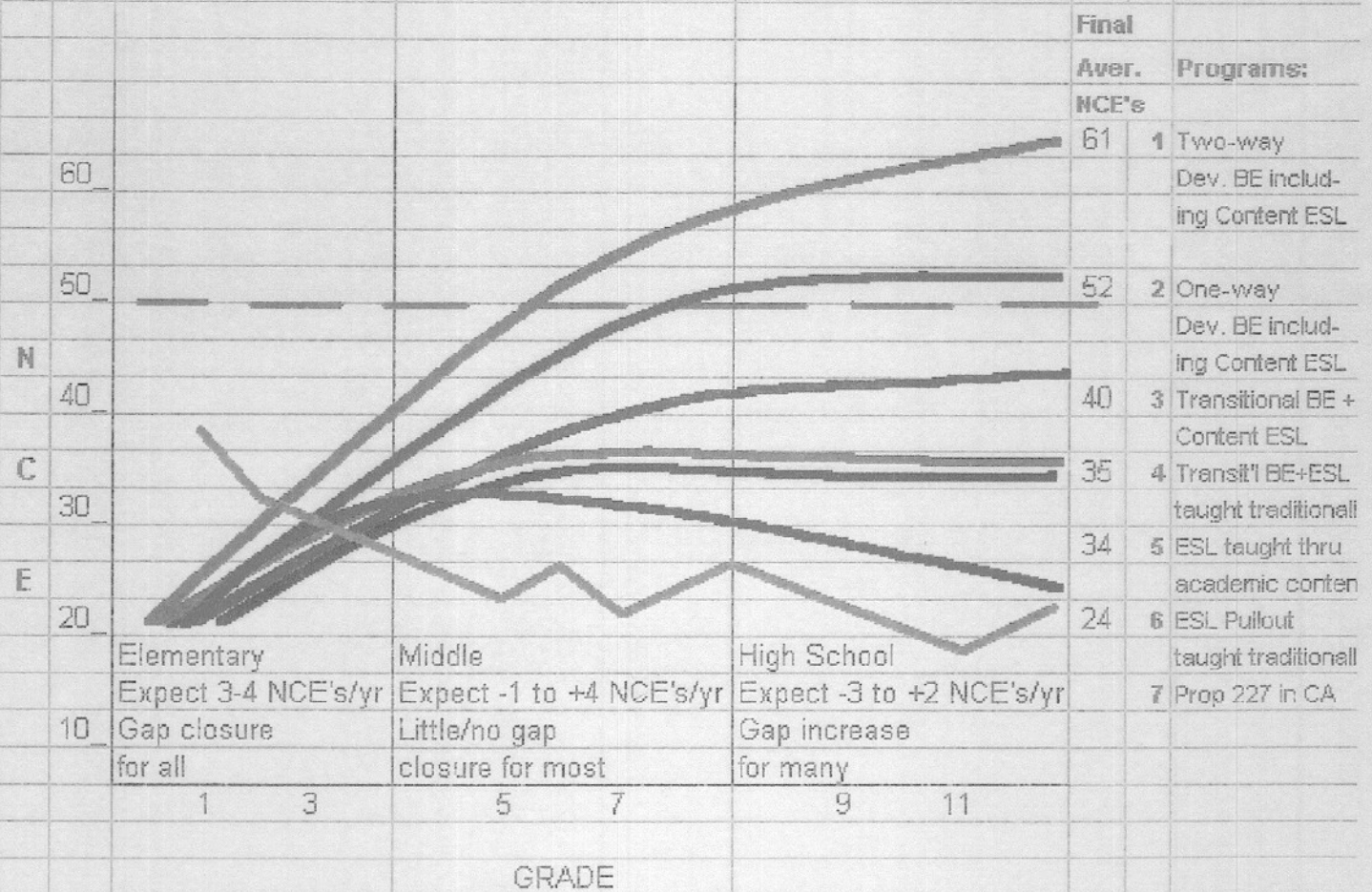


ENGLISH LEARNER'S LONG-TERM K-12 ACHIEVEMENT IN NORMAL CURVE EQUIVALENTS (NCE's) ON STANDARDIZED TESTS IN ENGLISH READING COMPARED ACROSS SEVEN PROGRAM MODELS

(Results aggregated from longitudinal studies of mature programs in 5 school districts and California from 1998-2000)

- Program 1: Two-way developmental bilingual education, including Content ESL
- Program 2: One-way developmental BE, including ESL taught through academic content
- Program 3: Transitional BE, including ESL taught through academic content
- Program 4: Transitional BE, including ESL, both taught traditionally
- Program 5: ESL taught through academic content using current approaches with no L1 use
- Program 6: ESL pullout - taught traditionally
- Program 7: Proposition 227 in California (sequential 3-year longitudinal cohorts)



Adaptation by Enrique Pérez of Chart © Copyright Wayne P. Thomas & Virginia P. Collier, 2000

First Grade Enrollment, Selected Texas Districts

05-06	1st Grade Enrollment	LEP Student Count	LEP %	African American Count	African American %	Hispanic Count	Hispanic %	Native American Count	Native American %	Asian/Pacific Count	Asian/Pacific %
AUSTIN ISD	7080	2464	35%	905	13%	4280	60%	7	0.10%	188	2.70
DALLAS ISD	14232	6721	47%	3775	27%	9593	67%	23	0.20%	115	0.80
EL PASO ISD	4951	2337	47%	268	5.40%	4015	81%	20	0.40%	65	1.30
HOUSTON ISD	18069	7950	44%	4948	27%	11156	62%	11	0.10%	525	2.90
06-07	1st Grade Enrollment	LEP Student Count	LEP %	African American Count	African American %	Hispanic Count	Hispanic %	Native American Count	Native American %	Asian/Pacific Count	Asian/Pacific %
AUSTIN ISD	7488	2758	37%	847	11.32%	4566	61.00%	11	0.15%	277	3.70
DALLAS ISD	14426	6815	47%	3715	25.75%	9868	68.40%	29	0.20%	136	0.94
EL PASO ISD	4941	2283	46%	243	4.92%	4011	81.18%	7	0.14%	71	1.44
HOUSTON ISD	18295	8052	44%	4871	26.62%	11445	62.56%	9	0.05%	546	2.98