

Senate Committee on Transportation and Homeland Security

June 8, 2010

Interim Charge #3:
Best Practices and Existing Gaps
Disaster Preparation and Response

Adolfo Valadez, MD, MPH, Assistant Commissioner
Division for Prevention and Preparedness Services



DSHS ESF8 Responsibilities

- DSHS is the lead agency for Emergency Support Function 8 (ESF8), Health and Medical.
- Missions include the following:
 - Health/Medical Assessment
 - Health Surveillance
 - Medical Special Needs Services
 - Chemical/Biological Consultation
 - Radiological Response
 - Mental Health Services
 - Public Health Information
 - Vector control
 - Wastewater/Solid Waste Disposal
 - Victim Identification/Mortuary Services

DSHS Missions

- DSHS primary disaster response missions include the following:
 - Medical Special Needs (MSN) Evacuation
 - MSN Sheltering
 - MSN Re-entry
 - MSN Patient Tracking
 - Coordination of Medical Services

MSN Patient

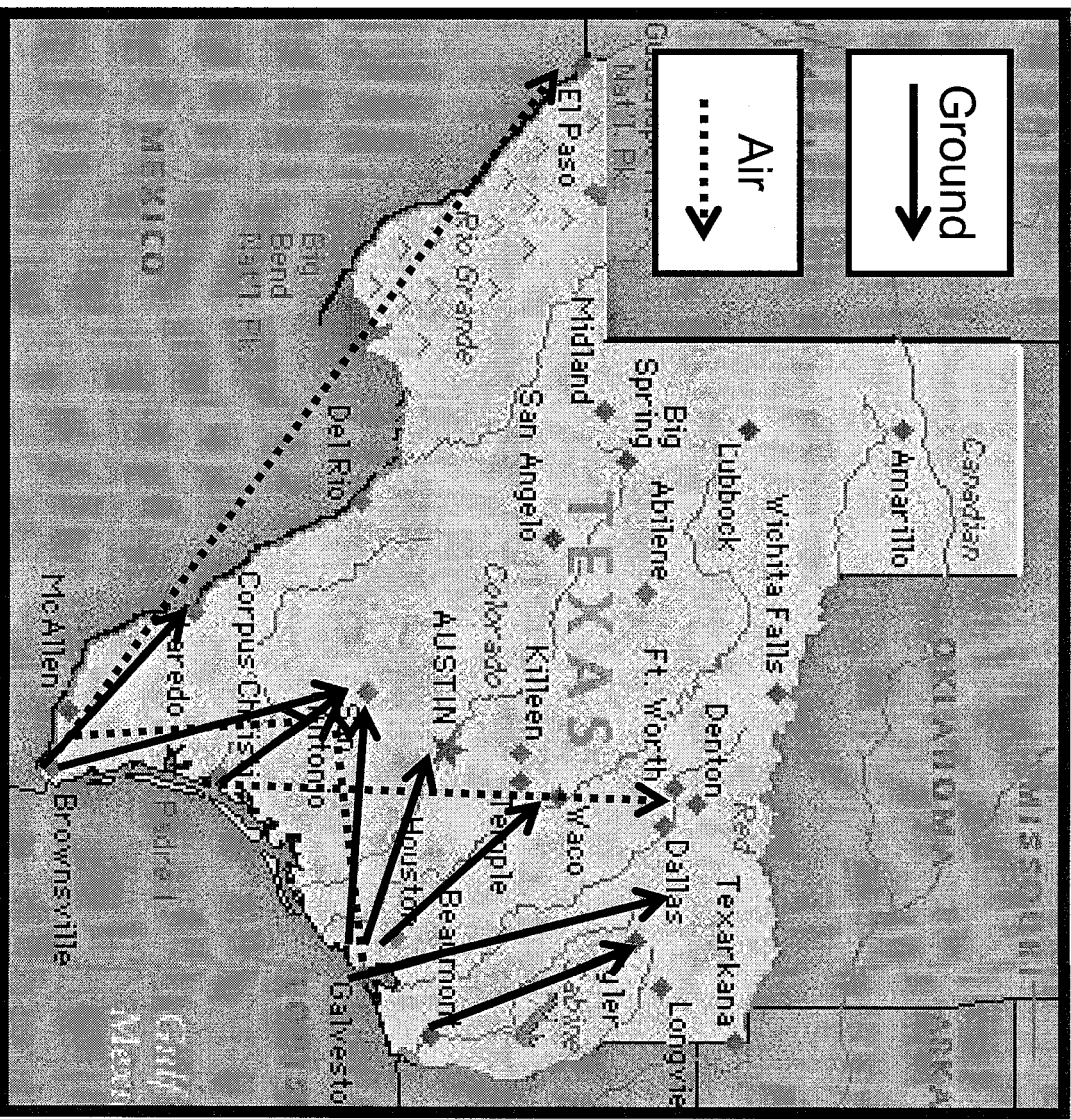
- 20% of the population (not all need state assistance)
- Physical disabilities, debilitating health conditions, and mental health issues
- Cannot be sheltered with general population but do not require hospitalization
- Require medical oversight

MSN Evacuation

- Facilities have evacuation plans and evacuation destinations; some plans fail
- Non-institutionalized individuals may also require assistance
- Conducted with a combination of air and ground resources including:
 - Ambulances
 - Buses
 - Litter Buses
 - Paratransits
 - Helicopters
 - TMF and DOD Aircraft

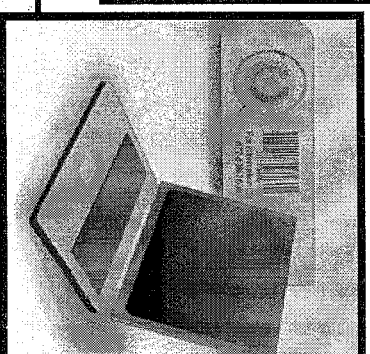
MSN Evacuation Plan

- MSN Evacuees are transported by ground evacuation to
 - Point to Point Cities
 - Shelter Hub Cities
 - Pre-Identified MSN Shelter Locations
- MSN Evacuees can be transported by air to locations including:
 - San Antonio
 - Dallas/Fort Worth
 - El Paso
 - Other



MSN Patient Tracking - TxSNETS

- TxSNETS - Web Based Program
- Allows tracking of evacuees throughout all phases:
 - Evacuation: Evacuees, pets, and assets are scanned into the database at the evacuation hub
 - Sheltering: Evacuees are scanned into shelter upon arrival
 - Reentry: Evacuees are scanned upon departure from shelter and also upon arrival at home jurisdiction



MSN Sheltering

- Sheltering jurisdiction participation is vital
- DSHS will coordinate resources to fill gaps:
 - MSN Shelter Packs
 - Shelter Infection Control Kits
 - Bariatric Cots
 - Oxygen
 - Dialysis
 - Medical Staffing
 - Shelter Management Staff

Best Practices/Challenges

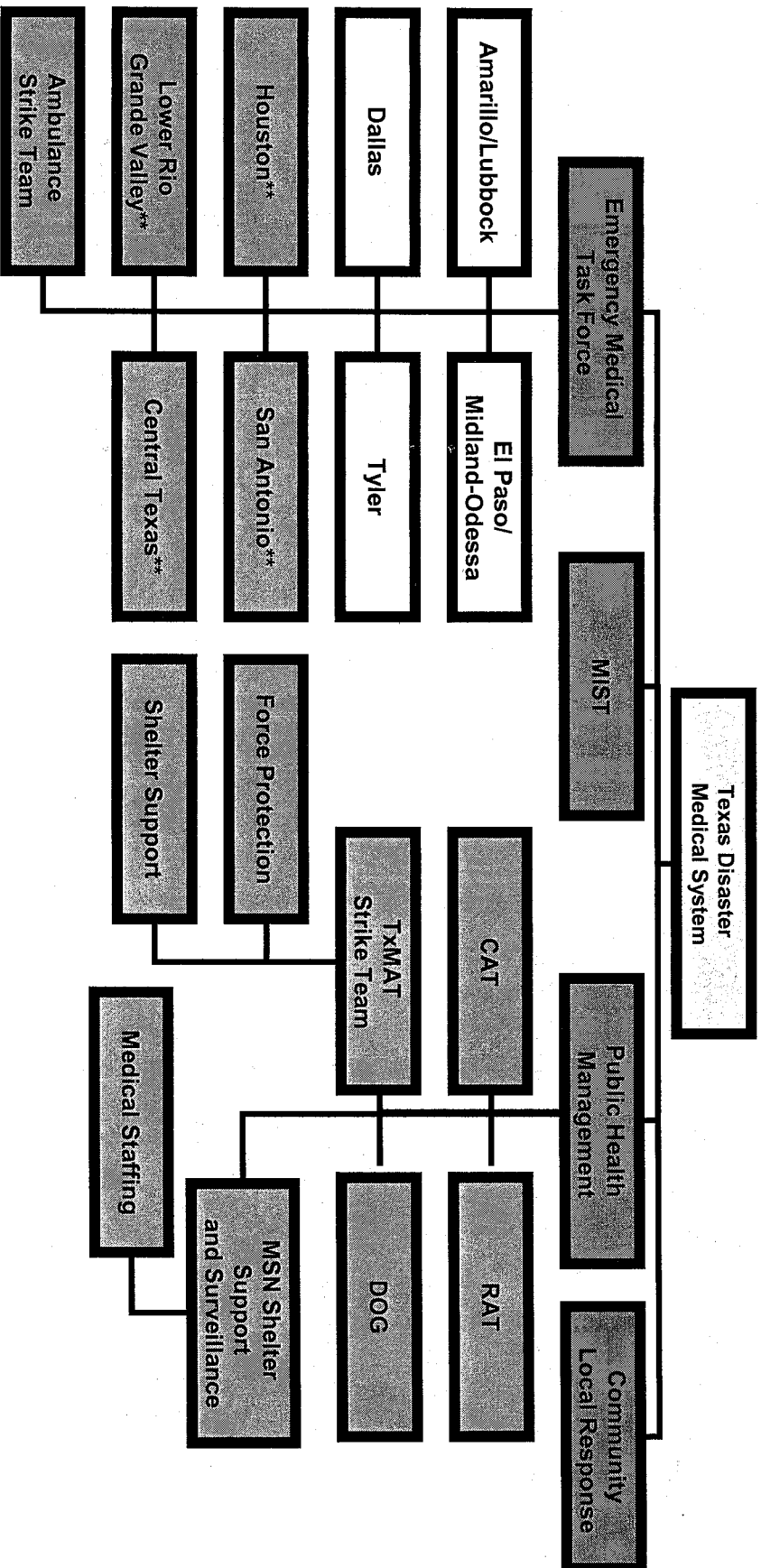
Best Practices

- Local Participation
- Contract Staff
- WebEOC
- Medical Operations Center
- Medical Incident Support Teams (MIST)

Challenges

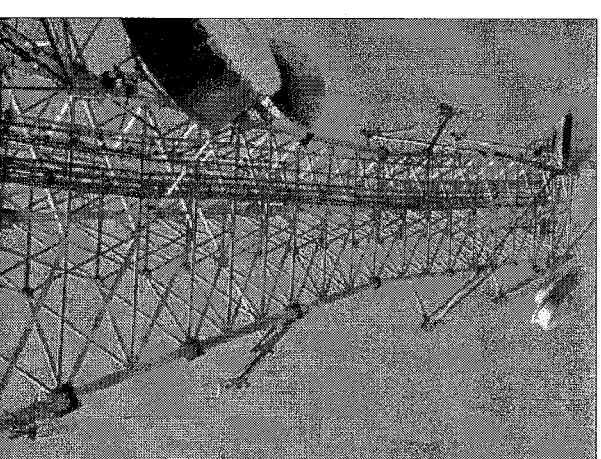
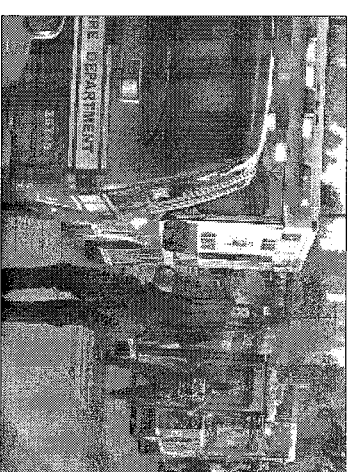
- Lack of hardened shelter facilities
- Distance between evacuation locations and shelters
- Reductions in federal funding
- Compressed evacuation timetable with limited transportation resources.

Texas Medical Assistance System



Communications/Interoperability

- WebEOC Fusion Project
- EM Systems:
 - Hospital Bed Reporting
 - Status
 - ESRD Facilities
- Hospital Communications
 - Landline/Cellular/Sat Phones
 - HAM Radios
 - P25 Compliant VHF Radios
 - EM Resource
- EMS Communications
 - P25 Compliant VHF Radios



Emergency System for Advance Registration of Volunteer Health Professionals (ESAR-VHP)

- Texas Disaster Volunteer Registry TDVVR
- Website- <http://texasdisastervolunteerregistry.org>
- EMCredential available for use in local jurisdictions.
- System verifies licensure for medical volunteers and credentials
- System administrators identified statewide
- Local Medical Reserve Corp Volunteer Units are priority groups for utilization of the tool.



For additional information:

Adolfo Valadez, MD, MPH

Assistant Commissioner

Division for Prevention and Preparedness Services

Department of State Health Services

1100 W. 49th Street, G-401

Austin, Texas 78756

512/458-7729

Adolfo.valadez@dsHS.state.tx.us