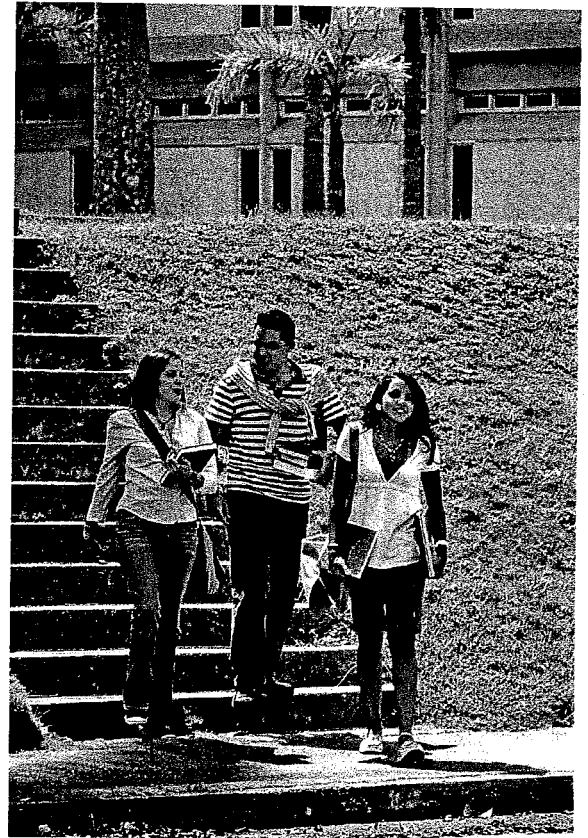


Transitioning into College: Connecting the Dots

A Collaborative Conference for
Adult and Community College Educators

September 12, 2008



Welcome

Conference Participants:

It is with great pleasure we welcome you to the First Annual *Transitioning into College: Connecting the Dots, A Collaborative Conference for Adult and Community College Educators*.

This conference is a joint effort between area adult education programs and community colleges to address the needs of educators who work with GED or Developmental Education adult learners. Our conference theme and objective is to “connect the GED dot with the post-secondary dot,” and further build relationships between GED and community college educators and administrators. The primary focus of this conference will be on closing the gap between adult and post-secondary education so that our students are best prepared, highly motivated and closer to reaching their academic and/or career goals.

Sessions offered at this event will emphasize the professional development needs that will enhance your instructional skills by providing strategies in addressing students’ needs, techniques to increase your effectiveness in the classroom, information beyond the classroom, as well as provide opportunities to interact with other educational professionals. The importance of having adult and college educators come together in an event such as this cannot be underestimated.

This conference could not have taken place without the contributions of many. Special thanks go to the Conference Planning Committee and all the presenters that took the time to organize and present meaningful sessions. Thanks to all the volunteer assistants, vendors, and showcase participants for contributing to the success of this event.

With your participation, we are confident this will be a rewarding and enjoyable event!

Sincerely,

South Central Project GREAT

A Message from the PATH Committee

In 2006, realizing that adult learners needed assistance with identifying a pathway and eliminating barriers encountered between adult education and post-secondary opportunities, the Postsecondary Awareness: Transition to Higher Education (PATH) Committee was formed. This committee is made up of adult, correctional, community college, and workforce educators and administrators whose primary goal is the development of an educated and skilled workforce within the South Texas area. The primary mission of the PATH committee is to share resources and ideas that will help create a seamless network of services for adult learners wanting to enhance their quality of life.

The Texas Workforce Commission’s “A First Look at Adult Education in Texas”, published in 2003, recommends that in order to meet the varied needs of Texas’ adult population, joint collaboration between Texas LEARNS, Texas Workforce Commission, and The Texas Higher Education Coordination Board and its’ local programs is necessary. Guided by this study’s recommendations, the PATH committee was formed in order to seek a systematic, lasting effort that utilizes each program’s resources to address the many needs of adult learners as they transition from adult education programs to post-secondary education or the workplace. This conference is just one of many efforts that we hope will lead to improving our students’ lives.

PATH Committee Members:

Kimberly Bredvad, ESC 20

David Chagoya, Windam School District

Chakib Chehadi, Workforce Solutions-Alamo

Veronica Collazo, City of San Antonio

Rene Coronado, ESC 20

Carmen DeLuna-Jones, Alamo Community Colleges – Southside Community Education Center

Irene Dennis, ACCD-Palo Alto College

Nancy Dunlap, Northside ISD

Olga Escamilla, ESC 20/Project GREAT

Eugene Gonzalez, Alamo Community Colleges - Westside Community Education Center

Debby Hewitt, ESC 20

Sharla Jones, ACCD-Northwest Vista College

Anelia Luna, ACCD-San Antonio College

Lydia Martinez, Northside ISD

Marti Nonemaker, North East ISD

Margie Quintanilla, Alamo Community Colleges – Eastside Community Education Center

Guadalupe Ruvalcaba, San Antonio ISD

Adelina S. Silva, Alamo Community Colleges

Jennifer Swoyer, Northside ISD

Federico Zaragoza, Alamo Community Colleges



Joanie Rethlake
State Director, Texas LEARNS

Joanie Rethlake is the State Director for Adult Education in Texas and has the responsibility for administering the state's adult education program and directing the professional development offered to adult education and family literacy programs. Formerly, she was the Director of Adult Education at Harris County Department of Education. She is past president of the Texas Association for Literacy and Adult Education (TALAE). Ms. Rethlake holds a Masters degree in Education. She is also promoting and taking part in the development of Industry-Specific Curriculum that will assist adult learners improve their employment possibilities. State activities includes membership and participation on the Texas Workforce System Strategic Action Plan representing adult education.

Morning Keynote Speaker



Dr. Bruce H. Leslie
Chancellor, Alamo Community Colleges

Dr. Bruce H. Leslie assumed the duties of Alamo Community College District Chancellor on November 1, 2006. As chancellor, he is the chief executive officer of the ACCD overseeing a \$220 million operational budget and a student enrollment of over 52,000 credit and another 25,000 continuing education students each term. Prior to assuming the chancellorship of ACCD, Dr. Leslie served as Chancellor of Houston Community College System for six and a half years, Chancellor of the Connecticut Community-Technical Colleges, a state system of 12 colleges, and for 13 years as President of Onondaga Community College in Syracuse, New York.

Dr. Leslie earned his bachelor's degree from Baldwin-Wallace College in Ohio and Master's degree from Sam Houston State University in Huntsville, Texas. He earned a Ph.D. in higher education administration from the Community College Leadership Program at the University of Texas in Austin.

Dr. Leslie has been active in the community where he has served as Director of the Greater Houston Partnership, the Houston Technology Center and the Mexican Institute of Houston. His numerous awards include the Phi Theta Kappa Shirley B. Gordon Leadership Award, the AARP Pinnacle Award for service to Hurricane Katrina Evacuees, and the President's Recognition from the African Americans in Higher Education in Connecticut Association. Dr. Leslie was also named a Distinguished Alumnus of the University of Texas at Austin in 1990.

Afternoon Keynote Speaker

Agenda		
Time	Location	Title
7:30 a.m. - 8:00 a.m.		Sign-in
8:15 a.m. - 9:00 a.m.	Maple/ Oak/ Mesquite/ Pecan	Welcome: Dr. Terry Smith, Executive Director, ESC-20 Keynote: Joanie Rethlake State Director, Texas LEARNS
	Atascosa/ Bandera	Want to go to college? Don't know where to start? The 1, 2, 3's and ABC's of Starting College
	Frio	Tools, Techniques, and Strategies for the Educator Working with Non-traditional Learners (Part I)
	Kendall	Bridge Back to the Future
	LaSalle	Planning Effective Lessons (Part I)
9:15 a.m. - 10:30 a.m.	Medina	Out of Your Seats, into Learning!
	Hickory	Understanding Learning and Using Mental Models for Students in Poverty (Part I)
	Laurel/ Magnolia	The 4-1-1 on Drugs!
	Pine	"One Size Doesn't Fit All" - Brain Based Learning Strategies (Part I)
	Redbud	Games to Reinforce Learning
	Atascosa/ Bandera	Generational Differences: What it Means in the Adult Education Classroom
	Frio	Tools, Techniques, and Strategies for the Educator Working with Non-traditional Learners (Part II)
	Kendall	Career and Technical Education (CTE) and the 21st Century Learner: Understanding Today's Students and Tomorrow's Employees
	LaSalle	Planning Effective Lessons (Part II)
10:45 a.m. - 12:00 p.m.	Medina	Starting out on the Right Foot: Becoming a Savvy Student
	Hickory	Understanding Learning and Using Mental Models for Students in Poverty (Part II)
	Laurel/ Magnolia	Information and Communication Literacy for the 21st Century
	Pine	"One Size Doesn't Fit All" - Brain Based Learning Strategies (Part II)
	Redbud	The San Antonio Independent School District 12-Hour Orientation

Agenda		
Time	Location	Title
12:00 p.m. - 1:00 p.m.	Maple/ Oak/ Mesquite/ Pecan	Lunch Keynote: Dr. Bruce H. Leslie Chancellor, Alamo Community Colleges
	Atascosa/ Bandera	Preparing Students for Freshman Composition and Workplace Writing
	Frio	Writing in the Reading Classroom
	Kendall	Test of Adult Basic Education (TABE) 9 & 10 (Part I)
1:15 p.m. - 2:30 p.m.	LaSalle	Using Effective Questioning Strategies in the Classroom (Part I)
	Medina	Ten Tips for College Success and More
	Hickory	Career Directions
	Laurel/ Magnolia	I Showed Up... What MORE Do You Want? (Part I)
	Pine	Engaging the Adult Learner
	Redbud	Math for Kindergarten to GED and Beyond
	Atascosa/ Bandera	Enrollment Services at Palo Alto College
	Frio	Colors of Personalities
	Kendall	Test of Adult Basic Education (TABE) 9 & 10 (Part II)
	LaSalle	Using Effective Questioning Strategies in the Classroom (Part II)
2:45 p.m. - 4:00 p.m.	Medina	Juggling Multiple Roles as an Adult Learner. Using Effective Time Management Techniques to Create Academic Success
	Hickory	Accelerate Those Who Can! Multiple Paths for Diverse Goals in Developmental Math
	Laurel/ Magnolia	I Showed Up... What MORE Do You Want? (Part II)
	Pine	Using the Lexile Framework for Reading to Transition from Adult Education to Workforce
	Redbud	Post-graduate Work: Transitioning GED Students

Session Descriptions

Accelerate Those Who Can! Multiple Paths for Diverse Goals in Developmental Math

Presented by Cindi Bluhm and Anna Harwin - Northwest Vista College

The developmental math program at Northwest Vista College is exploring increasing the velocity of developmental learners by offering more choices for completing the developmental math sequence. These choices are predicated on student goals, point of entry placement, and established acceleration techniques. Using clearly defined analytic techniques to establish criteria, student needs are addressed.

Bridge Back to the Future

Presented by Clemente Rocha III- Windham School District

Windham School District's strategy to bridge offenders from school (prison) to work.

Career and Technical Education (CTE) and the 21st Century Learner: Understanding Today's Students and Tomorrow's Employees

Presented by Ruthie Kneupper - Education Service Center, Region 20

The 21st century learner of today, our new millennial generation is very different from the "Generation Xers" and even the "Baby Boomers" who are currently in the workforce. To meet the needs of this very different generation and to help them prepare for the three "R's" (Rigor, Relevancy and Relationships) for success in a global workforce, classrooms are changing, instructional strategies are changing and even the workplace is changing.

Having a better understanding of these many changes can help us learn to work and grow together in a collaborative, communicative and productive way.

Career Directions

Presented by Rick Garcia - Workforce Solutions - Alamo

Learn about the current economic outlook, the pulse of the industries, strategic Labor Market Information (LMI) and the collaboration between workforce and education.

Colors of Personalities

Presented by Pat Brown, Debbie Williams, Raimie Daniel, and Sharon Jonas - Education Service Center, Region 20

An informative session to identify the different personalities in the workplace and how to work with all "colors".

Engaging the Adult Learner

Presented by Dr. Jeff Goldhorn - University of Phoenix and Education Service Center, Region 20

This session will examine the unique characteristics of adult students. Adult learner theory will be examined and participants will learn practical strategies for engaging adults in the classroom. Content for the session will be based on the book The Adult Learner by Robin Fogarty and Brian Pete and How to Make Presentations that Teach and Transform by Robert Garmston and Bruce Wellman. The presenter will provide relevant examples based on his experience as an adult trainer and university professor.

Session Descriptions

Enrollment Services at Palo Alto College

Presented by Elizabeth Aguilar- Villarreal and Eloisa Cordova - Palo Alto College

A comprehensive overview of the new student enrollment process at Palo Alto College will be provided. Covered in the presentation will be information on the Welcome Enrollment Center, the Apply Texas, placement and testing, and the Group Advising processes. Additionally, the presenters will provide a general overview of the financial aid requirements for new students. Other services provided by the Center will also be introduced.

Games to Reinforce Learning

Presented by Dr. Rick Alvarado - The University of Phoenix and Education Service Center, Region 20

In this interactive session, participants will learn strategies they can use in their classrooms to reinforce concepts presented during the lesson via the use of games.

Generational Differences: What it Means in the Adult Education Classroom

Presented by Dr. Millie Klein - Webster University and Education Service Center, Region 20

This session will provide an overview of the different generations currently found in the workplace and the adult education classroom. We will review values, interests, and training preferences of each generation and how they impact adult education and the workplace.

I Showed Up... What MORE Do You Want?

Presented by Darlene Redcliff - Education Service Center, Region 20

Motivating others to participate and learn in the classroom is not always an easy task. It takes more than them just showing up. This research based session will provide participants with an understanding of what motivates us to do what we do and don't do. It offers instructors practical information and strategies to motivate even the most reluctant learner.

Information and Communication Literacy for the 21st Century

Presented by Susanna Garza - Education Service Center, Region 20

Today's students need to be empowered to succeed in an increasingly flat, globally competitive, digitally interconnected society. Digital literacy, also known as Information and Communication Literacy, is critical in today's K-12 and higher education, and the workplace. It is estimated that 40% of students enrolled in community colleges and 24% of students enrolled in four-year universities are not equipped with such skills. Find out what is the difference between traditional literacy and digital literacy, and the support that state-funded online resources can provide.

Session Descriptions

Juggling Multiple Roles as an Adult Learner: Using Effective Time Management Techniques to Create Academic Success

Presented by Mary Helen Martinez - Texas State University

Transitioning to higher education is challenging for any student, in particular for adult learners. Adult education students juggle multiple roles such as a student, parent, employee, etc. Typically, instructors are not prepared to address the level of need of educationally disadvantaged learners. Integrating time management techniques in the classroom will allow students to get organized and stay focused on their goals while fostering success in college and in the workplace.

Math for Kindergarten to GED and Beyond

Presented by Anthony Chan, Mariela Padilla, Qualan Opico - Texas LEARNS

In this session, we will look at basic mathematical practices to teach algebra. We will apply these practices in teaching algebraic thinking through patterns and basic mathematical concepts to all students and all levels. Come and learn how to integrate all of these methods into the classroom to maximize your student learning and achievement. Participants will explore activities incorporating instructional methods needed for high student achievement. Take lesson ideas back to share with your students. With appropriate instruction, students can comprehend advanced mathematical concepts and experience success through basic mathematical practices.

"One Size Doesn't Fit All" Brain Based Learning Strategies

Presented by Lisa Kirby - Education Service Center, Region 20

"One size fits all", does not work in today's classroom. Come and learn practical strategies for optimizing academic performance in the classroom. Discover why positive attitude, understanding learning styles and brain research can make you re-think the way you teach. Whether you have been in the classroom for one year or twenty years, you will have the opportunity to gain more understanding of how and why differentiated instruction works. Be prepared to move, have fun, and fill up your teacher toolbox!!!

Out of Your Seats, Into Learning!

Presented by Kimberly Bredvad - Education Service Center, Region 20

Do you find students text-messaging on their cell phones? Are they taking frequent bathroom breaks? Do they doodle instead of take notes? Do you find yourself doing all of the talking during class? If so, it's time to get your students out of their seats. Students actively participating in classroom instruction helps build classroom community, increases retention, and motivates students to learn. Join us in exploring free and inexpensive methods to engage your students in their learning. Strategies will be compiled from the works of Eric Jensen, Robert J. Garmston, Brice M. Wellman, Robin J. Fogarty, and Brian M. Pete. Attend this session for a chance to win books and materials!

Session Descriptions

Planning Effective Lessons

Presented by Nancy Jordan - Northside Independent School District and Jackie Martin - Education Service Center, Region 20

This presentation will cover Madelyn Hunter's Lesson Cycle model that structures a lesson from beginning to end. Each step of the cycle; Focus, Stating Lesson Objective, Explanation, Checking for Understanding, Guided Practice, Independent Practice, Assessment, and Closure, will be explained and discussed prior to participants actually developing their own lesson. Come learn more about developing and presenting effective lessons.

Post-graduate Work: Transitioning GED Students to the Community College Level

Presented by Joe Belk - North East Independent School District

This session will focus on emphasizing post-GED training in the GED class. We will also discuss the Accuplacer entrance exam into community college and its differences and similarities to the GED.

Preparing Students for Freshman Composition and Workplace Writing

Presented by Dr. Mitchell Burchfield - Southwest Texas Junior College and Dr. David Sabrio - Texas A&M University - Kingsville

This interactive session will present and share successful strategies to prepare ABE and developmental education students for college freshman composition.

Starting Out on the Right Foot: Becoming a Savvy Student

Presented by Dr. Yolanda Reyna and Patricia Parma - Palo Alto College

Presentation content will cover general college information, the process of selecting and scheduling classes, and other tidbits of wisdom for a successful start. Topics will include course placement information, course load options, degree plans, transfer options, financial aid and payment deadlines and other "reality checks".

Ten Tips for College Success and More

Presented by Irma C. Cantu - Coastal Bend College, Beeville

The presenter will present 10 tips for students to help them experience success their first semester in college. Also, the presenter will share cooperative activities for the first day of class and for learning vocabulary.

Session Descriptions

Understanding Learning and Using Mental Models for Students in Poverty

Presented by Pamela L. Chambers - Education Service Center, Region 20

This session contains numerous strategies for helping students learn vital course content while building cognitive capacity. It will provide key background information about how and why these strategies work, along with a synopsis of brain research and cognitive studies. Understanding mental models and how they work is essential to being able to use them.

Training is conducted by a certified trainer of "A Framework for Understanding Poverty".

Participants will receive the "Quick Flip Questions for Critical Thinking" tool from Edupress to assist them as they develop their strategies for classroom use.

Using Effective Questioning Strategies in the Classroom

Presented by Rene Coronado - Education Service Center, Region 20

Increasing the critical thinking abilities in our students enhances the probability of academic success. This session addresses the tools that teachers can use in the classroom to ensure this happens. Participants will receive hands-on tools that they can implement immediately in their classroom.

Using the Lexile Framework for Reading to Transition from Adult Education to Workforce

Presented by John Stevenson - Texas LEARNS

This session will provide an introduction to the Lexile Framework for Reading, which permits the matching of books with readers, and will explore applications of the Lexile to help transition adult education learners to workforce or higher education.

Want to go to college? Don't know where to start? The 123's and ABC's of Starting College

Presented by Gene Gonzalez - Alamo Community Colleges Westside Community Education Center

This presentation will focus on the four basic steps essential to enrolling in any college: 1. financial aid, 2. admissions, 3. testing, and 4. advising and registration.

Attention will also be given to the role of the Alamo Community Colleges' Community Education Centers in: Facilitating the transition into college, the profile of the typical ACCD student, the affordability of a college education, the feasibility of navigating college academically, the financial benefits of a college education, and employment prospects for certificate and degree earners.

Writing in the Reading Classroom

Presented by Krisley L. Schroeder - Coastal Bend College

This session will discuss what the experts have to say about the reading/writing connection and will reveal ways to apply this knowledge to the classroom. Specifically, this session will answer the question: "What types of writing activities will benefit developmental readers?" The goal of this presentation is to supply some practical guidelines that instructors can utilize to improve their reading/writing instruction.

Session Descriptions

Test of Adult Basic Education (TABE) 9 & 10

Presented by Michelle Yzaguirre - Education Service Center, Region 20

TABE 9 & 10 accurately predicts how adult students may perform on the GED and measures the skills adults need to succeed on the job and in life. Participants will learn how to prepare for, administer, score and interpret the TABE 9 & 10 assessment series in a hands-on environment.

The 4-1-1 on Drugs

Presented by Lucien Costley - Education Service Center, Region 20

Do you really know what the "up & up" is about drugs? Do you know what kids and young adults are doing...in school, at home, in the community?

Brought to you by the Office of Safe and Drug-Free Schools and Communities, this session is designed to increase drug awareness to all members of the school community and parents. The subject matter presented is for an adult audience: violent, graphic, sexual and realistic in nature. Participants will understand some of the key trends, hot topics and information that can help deal with students and drug influences in the classroom or at home.

Participants will walk away with a guide of 2,300 street terms of all drugs on the illegal market, learn a thing or two and possibly be amazed at where the drugs are hidden! Guaranteed...jaws will drop!

The San Antonio Independent School District (SAISD) 12-Hour Orientation

Presented by Mark Sanchez and Irene Ramos - San Antonio Independent School District

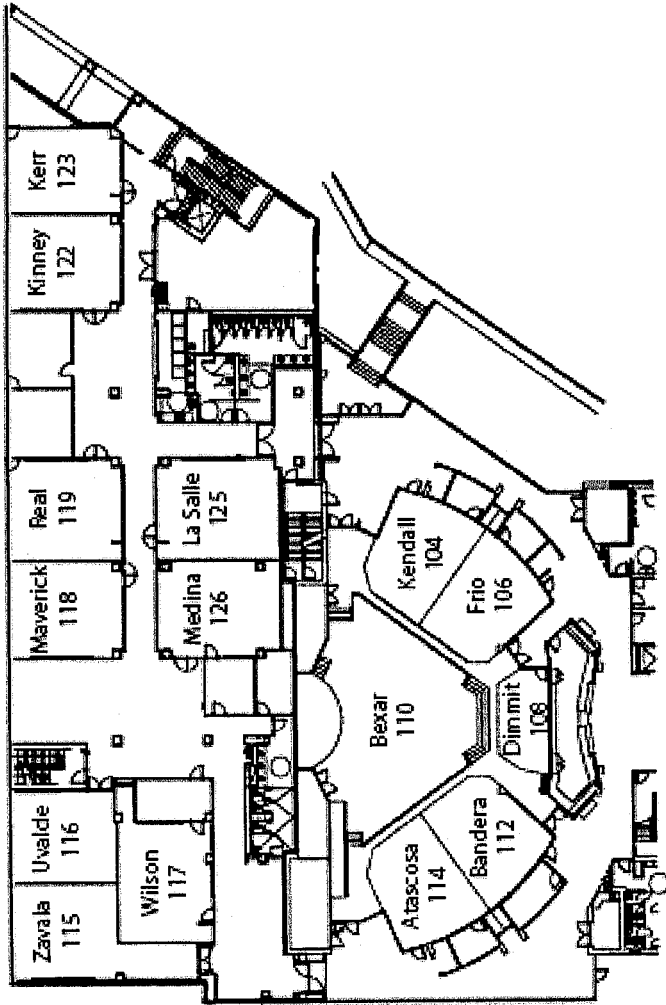
This presentation will provide an outline of topics covered in the SAISD 12-hour orientation. Presenters will shed light on the facts about students and their attitude toward the orientation.

Tools, Techniques, and Strategies for the Educator Working with Non-traditional Learners

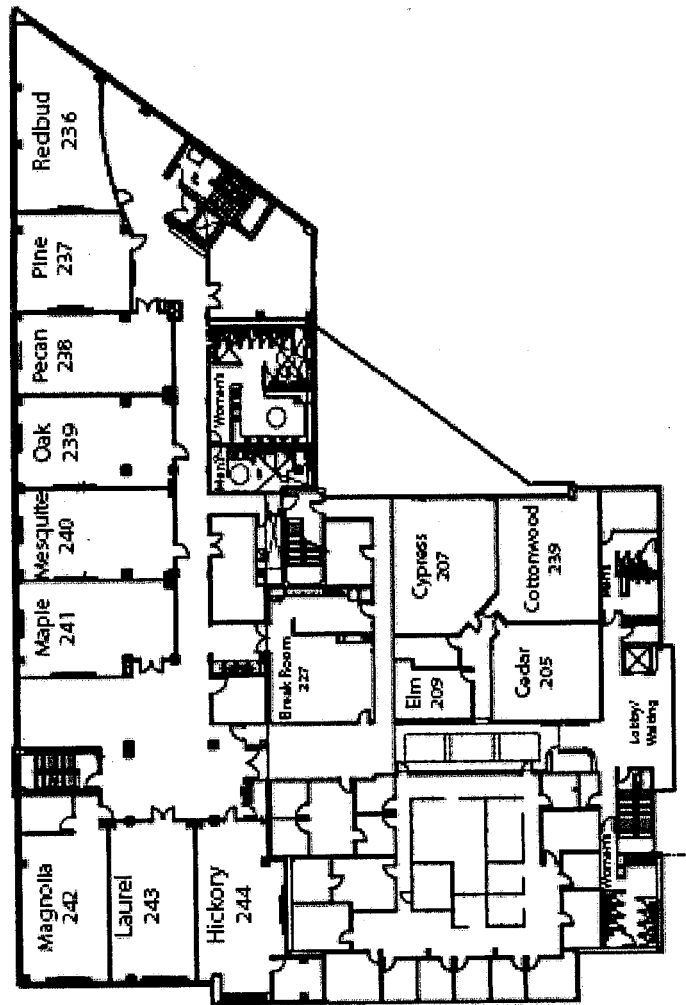
Presented by Stacy Bullock - Education Service Center, Region 20

The objective of this training is to provide participants with a working knowledge of a myriad of tools, techniques, and strategies for working with non-traditional learners including ESL, special education, bilingual, and at-risk students. These tools and strategies are intended to help the educator better instruct and facilitate learning among this group of learners. The target training audience is anyone interested in knowing more about what it 'feels' like to be a non-traditional learner, and for anyone wishing to gain instructional tools and techniques that will help assist these students in learning the necessary content and earn eventual success.

Conference Center First Floor



Conference Center Second Floor



South Central Project GREAT Staff

Olga M. Escamilla
Education Specialist, Supervisor
olga.escamilla@esc20.net
(210) 370-5284

Rose Saldivar
Office Assistant
rose.saldivar@esc20.net
(210) 370-5236

Stephen Enriquez
Data Clerk II
stephen.enriquez@esc20.net
(210) 370-5306

GREAT

“Getting Results Educating Adults in Texas”