

The Population of Texas: Historical Patterns and Future Trends Affecting Education

by

Steve H. Murdock

**Institute for Demographic and
Socioeconomic Research**

The University of Texas at San Antonio

Major Demographic Trends Affecting the Future

- **Change in Rates and Sources of Population Growth**
- **Increase in the Non-Anglo Population**
- **Aging of the Population**

Total Population Change

Total Population and Percent Population Change in Texas and the United States, 1850-2005

Year*	Total Population		Percent Change	
	Texas	U.S.	Texas	U.S.
1850	212,592	23,191,876	---	---
1860	604,215	31,443,321	184.2	35.6
1870	818,579	39,818,449	35.5	26.6
1880	1,591,749	50,155,783	94.5	26.0
1890	2,235,527	62,947,714	40.4	25.5
1900	3,048,710	75,994,575	36.4	20.7
1910	3,896,542	91,972,266	27.8	21.0
1920	4,663,228	105,710,620	19.7	14.9
1930	5,824,715	122,775,046	24.9	16.1
1940	6,414,824	131,669,275	10.1	7.2
1950	7,711,194	150,697,361	20.2	14.5
1960	9,579,677	179,323,175	24.2	19.0
1970	11,196,730	203,302,031	16.9	13.4
1980	14,229,191	226,545,805	27.1	11.4
1990	16,986,510	248,709,873	19.4	9.8
2000	20,851,820	281,421,906	22.8	13.2
2005	22,859,968	296,410,404	9.6	5.3

* All values for the decennial dates are for the indicated census year. Values for 2005 are as estimated by the U.S. Bureau of the Census.

Source: Derived from U.S. Bureau of the Census Estimates for dates indicated by the Texas State Data Center, University of Texas at San Antonio

Total Population and Components of Population Change in Texas, 1950-2005

Year*	Population	Numerical Change	Natural Increase	Net Migration	Percent Change	Percent Change Due to	
						Natural Increase	Net Migration
1950	7,711,194	—	—	—	—	—	—
1960	9,579,677	1,868,483	1,754,652	113,831	24.23	93.91	6.09
1970	11,196,730	1,617,053	1,402,683	214,370	16.88	86.74	13.26
1980	14,229,191	3,032,461	1,260,794	1,771,667	27.08	41.58	58.42
1990	16,986,510	2,757,319	1,815,670	941,649	19.38	65.85	34.15
2000	20,851,820	3,865,310	1,919,281	1,946,029	22.76	49.65	50.35
2005	22,859,968	2,008,148	1,155,182	852,966	9.63	57.52	42.48

* All values for the decennial dates are for the indicated census year. Value for 2005 is for July 1 as estimated by the U.S. Bureau of the Census.

Source: Derived from U.S. Bureau of the Census Estimates for dates indicated by the Texas State Data Center, University of Texas at San Antonio.

Ten Fastest Growing States in Numerical Terms in the United States, 1990-2000

State	1990 Population*	2000 Population*	Numerical Change 1990-2000	Percent Population Change 1990-2000
California	29,760,021	33,871,648	4,111,627	13.8
Texas	16,986,510	20,851,820	3,865,310	22.8
Florida	12,937,926	15,982,378	3,044,452	23.5
Georgia	6,478,216	8,186,453	1,708,237	26.4
Arizona	3,665,228	5,130,632	1,465,404	40.0
North Carolina	6,628,637	8,049,313	1,420,676	21.4
Washington	4,866,692	5,894,121	1,027,429	21.1
Colorado	3,294,394	4,301,261	1,006,867	30.6
Illinois	11,430,602	12,419,293	988,691	8.6
New York	17,990,455	18,976,457	986,002	5.5

* Population values are decennial census counts for April 1 of the year indicated

Ten Fastest Growing States in Numerical Terms in the United States, 2000-2005

State	2000 Population*	2005 Population*	Numerical Change 2000-2005	Percent Change 2000-2005
California	33,871,648	36,132,147	2,260,499	6.7
Texas	20,851,820	22,859,968	2,008,148	9.6
Florida	15,982,378	17,789,864	1,807,486	11.3
Georgia	8,186,453	9,072,576	886,123	10.8
Arizona	5,130,632	5,939,292	808,660	15.8
North Carolina	8,049,313	8,683,242	633,929	7.9
Virginia	7,078,515	7,567,465	488,950	6.9
Nevada	1,998,257	2,414,807	416,550	20.8
Washington	5,894,121	6,287,759	393,638	6.7
Colorado	4,301,261	4,665,177	363,916	8.5

* Population values are decennial census counts for April 1 for 2000 and estimates for July 1 for 2005.

Source: Derived from U.S. Bureau of the Census Estimates for dates indicated by the Texas State Data Center, University of Texas at San Antonio

Ten Fastest Growing States in Percentage Terms in the United States, 1990-2000

State	1990 Population*	2000 Population*	Numerical Change 1990-2000	Percent Population Change 1990-2000
Nevada	1,201,833	1,998,257	796,424	66.3
Arizona	3,665,228	5,130,632	1,465,404	40.0
Colorado	3,294,394	4,301,261	1,006,867	30.6
Utah	1,722,850	2,233,169	510,319	29.6
Idaho	1,006,749	1,293,953	287,204	28.5
Georgia	6,478,216	8,186,453	1,708,237	26.4
Florida	12,937,926	15,982,378	3,044,452	23.5
Texas	16,986,510	20,851,820	3,865,310	22.8
North Carolina	6,628,637	8,049,313	1,420,676	21.4
Washington	4,866,692	5,894,121	1,027,429	21.1

* Population values are decennial census counts for April 1 of the year indicated

Ten Fastest Growing States in Percentage Terms in the United States, 2000-2005

State	2000 Population*	2005 Population*	Numerical Change 2000-2005	Percent Population Change 2000-2005
Nevada	1,998,257	2,414,807	416,550	20.8
Arizona	5,130,632	5,939,292	808,660	15.8
Florida	15,982,378	17,789,864	1,807,486	11.3
Georgia	8,186,453	9,072,576	886,123	10.8
Utah	2,233,169	2,469,585	236,416	10.6
Idaho	1,293,953	1,429,096	135,143	10.4
Texas	20,851,820	22,859,968	2,008,148	9.6
Colorado	4,301,261	4,665,177	363,916	8.5
North Carolina	8,049,313	8,683,242	633,929	7.9
Delaware	783,600	843,524	59,924	7.6

* Population values are decennial census counts for April 1 for 2000 and estimates for July 1 for 2005.

Source: Derived from U.S. Bureau of the Census Estimates for dates indicated by the Texas State Data Center, University of Texas at San Antonio

Ten Largest States in United States by Population Size in 2000 Ranked by Population Size in 2000

State	1990 Population*	2000 Population*	Numerical Change 1990-2000	Percent Change 1990-2000
California	29,760,021	33,871,648	4,111,627	13.8
Texas	16,986,510	20,851,820	3,865,310	22.8
New York	17,990,455	18,976,457	986,002	5.5
Florida	12,937,926	15,982,378	3,044,452	23.5
Illinois	11,430,602	12,419,293	988,691	8.6
Pennsylvania	11,881,643	12,281,054	399,411	3.4
Ohio	10,847,115	11,353,140	506,025	4.7
Michigan	9,295,297	9,938,444	643,147	6.9
New Jersey	7,730,188	8,414,350	684,162	8.9
Georgia	6,478,216	8,186,453	1,708,237	26.4

* Population values are decennial census counts for April 1 of the year indicated

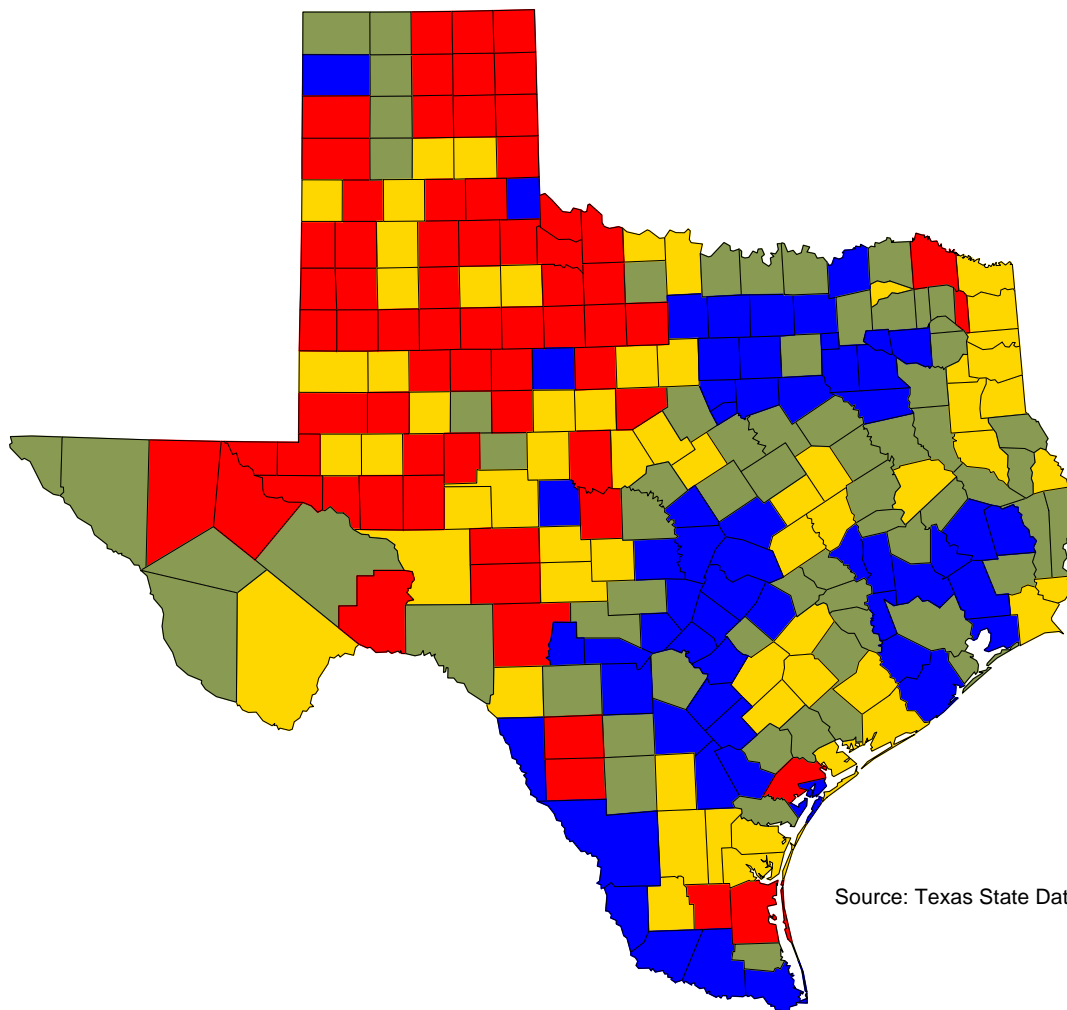
Ten Largest States in United States by Population Size in 2000 Ranked by Population Size in 2005

State	2000 Population*	2005 Population*	Numerical Change 2000-2005	Percent Change 2000-2005
California	33,871,648	36,132,147	2,260,499	6.7
Texas	20,851,820	22,859,968	2,008,148	9.6
New York	18,976,457	19,254,630	278,173	1.5
Florida	15,982,378	17,789,864	1,807,486	11.3
Illinois	12,419,293	12,763,371	344,078	2.8
Pennsylvania	12,281,054	12,429,616	148,562	1.2
Ohio	11,353,140	11,464,042	110,902	1.0
Michigan	9,938,444	10,120,860	182,416	1.8
Georgia	8,186,453	9,072,576	886,123	10.8
New Jersey	8,414,350	8,717,925	303,575	3.6

* Population values are decennial census counts for April 1 for 2000 and estimates for July 1 for 2005.

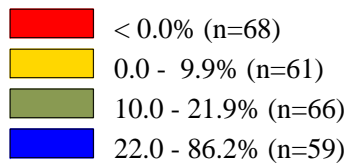
Source: Derived from U.S. Bureau of the Census Estimates for dates indicated by the Texas State Data Center, University of Texas at San Antonio

Population Change in Texas Counties, 1990-2000

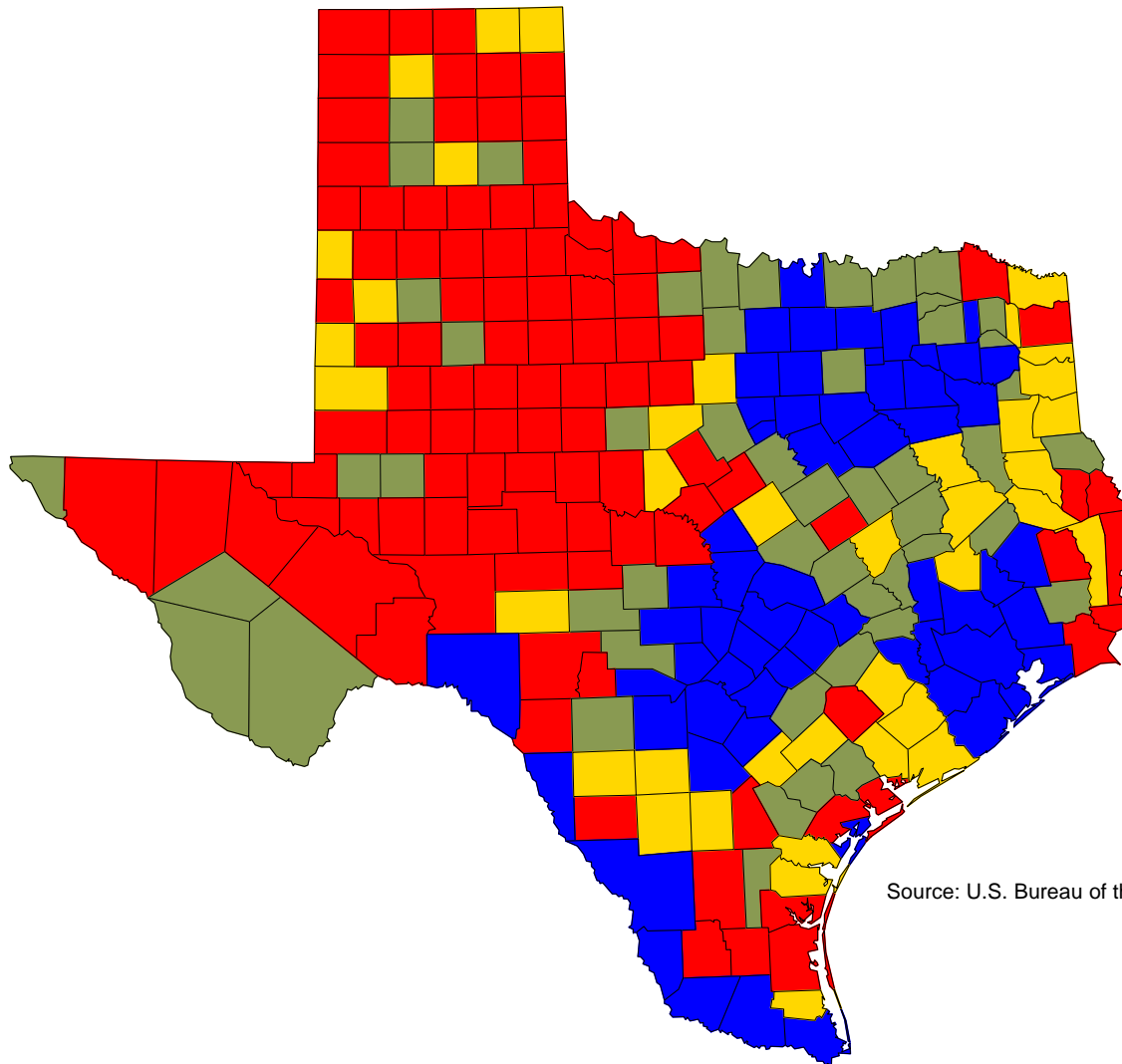


Source: Texas State Data Center

Percent Change 2000-2003



Population Change in Texas Counties, 2000-2004



Source: U.S. Bureau of the Census, 2004 County Estimates

Percent Change 2000-2004

- < 0.0% (n=103)
- 0.0 - 1.9% (n=39)
- 2.0 - 5.4% (n=51)
- 5.5 - 35.2% (n=61)

Racial/Ethnic Change in Texas

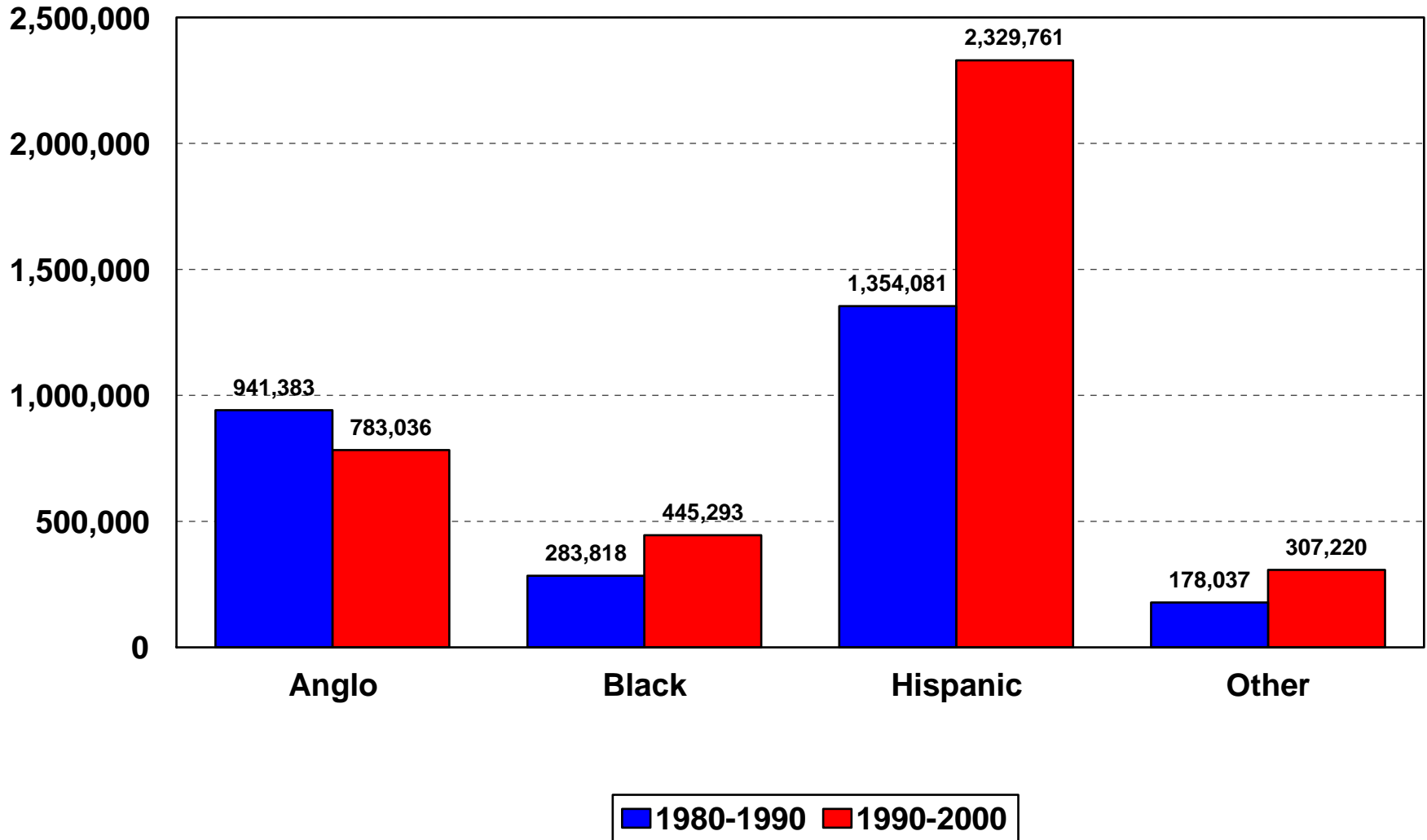
Texas Rank Among States on Selected Characteristics of Race/Ethnicity Groups

Group	Texas Value	Texas Rank	Comparison Areas
<u>By Size in 2000</u>			
Anglo	11,074,716	3	California; 17.0 million New York; 12.5 million
Black	2,421,653	2	New York; 2.9 million
Hispanic	6,669,666	2	California; 11.0 million
Other	685,785	4	California; 4.2 million New York; 1.2 million Hawaii; 733,000

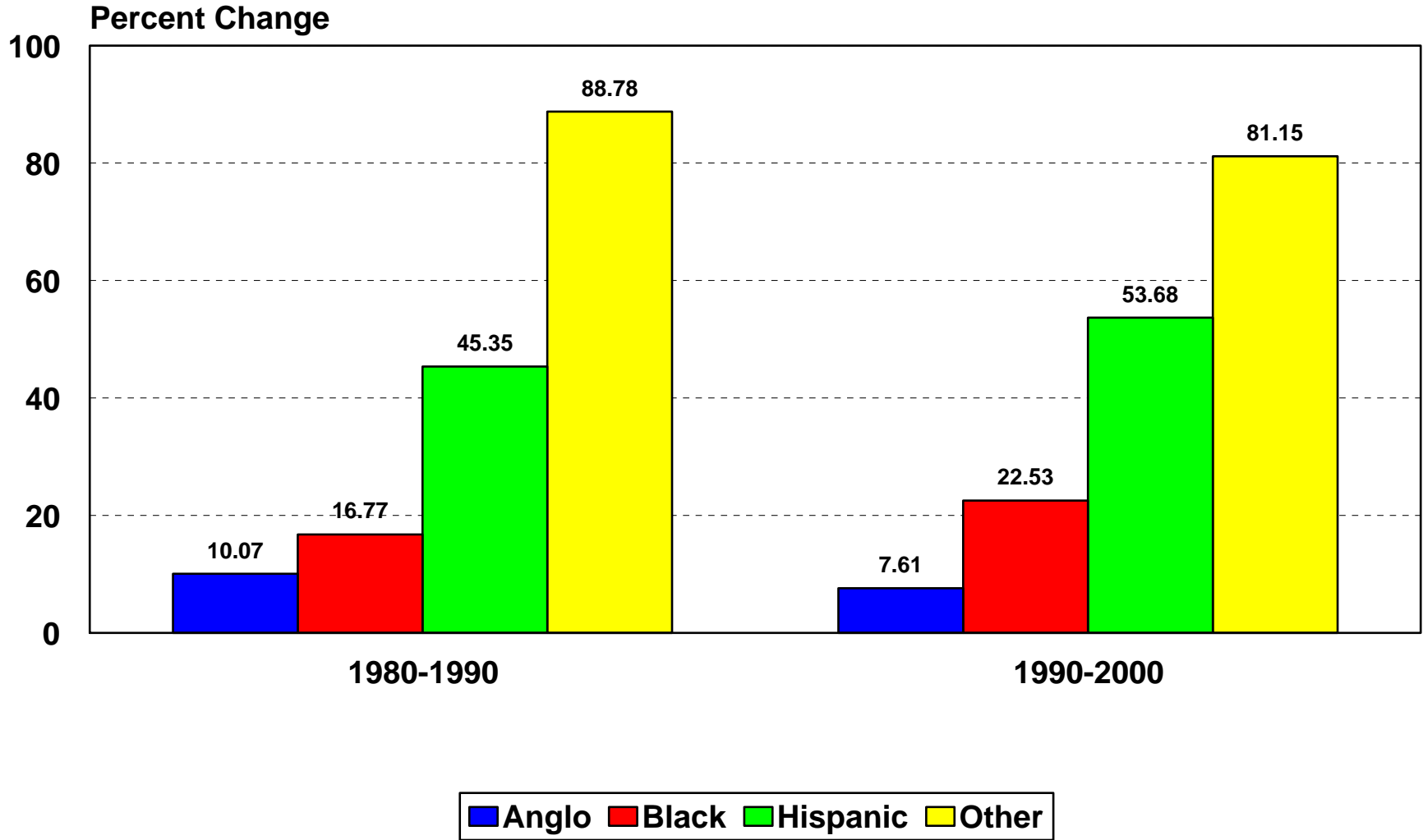
Texas Rank Among States on Selected Characteristics of Race/Ethnicity Groups

Group	Texas Value	Texas Rank	Comparison Areas
<u>By Numerical Change, 1990-2000</u>			
Anglo	783,036	2	Florida; 1.1 million
Black	445,293	3	Florida; 665,000 Georgia; 627,000
Hispanic	2,329,761	2	California; 3.3 million
Other	307,220	3	California; 1.2 million New York; 493,000

Numerical Change in Population by Race/Ethnicity in Texas for 1980-1990 and 1990-2000



Percent Change in Population by Race/Ethnicity for 1980-1990 and 1990-2000 in Texas



Population Change by Race/Ethnicity in Texas, 2000-2004

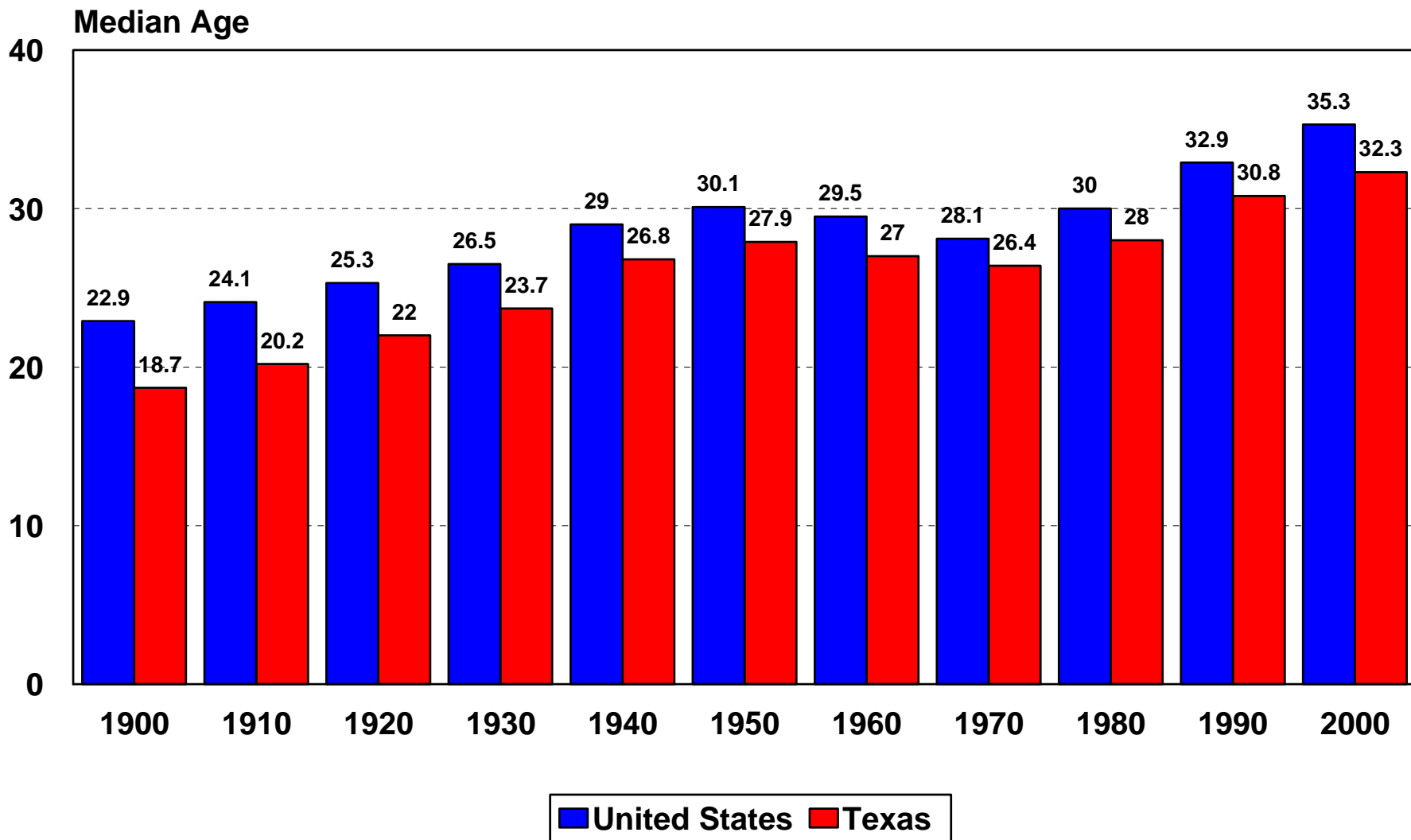
Race/ Ethnicity	2000 Census Population	2004 Estimated Population	Numerical Change 2000- 2004	Percent Change 2000- 2004	Percent of Population	
					2000	2004
Anglo	11,074,716	11,222,394	147,678	1.3	53.1	49.9
Black	2,421,653	2,567,841	146,188	6.0	11.6	11.4
Hispanic	6,669,666	7,848,698	1,179,032	17.7	32.0	34.9
Other	685,785	851,089	165,304	24.1	3.3	3.8
Total	20,851,820	22,490,022	1,638,202	7.9	100.0	100.0

Source: Texas State Data Center, Institute for Demographic and Socioeconomic Research, University of Texas at San Antonio.

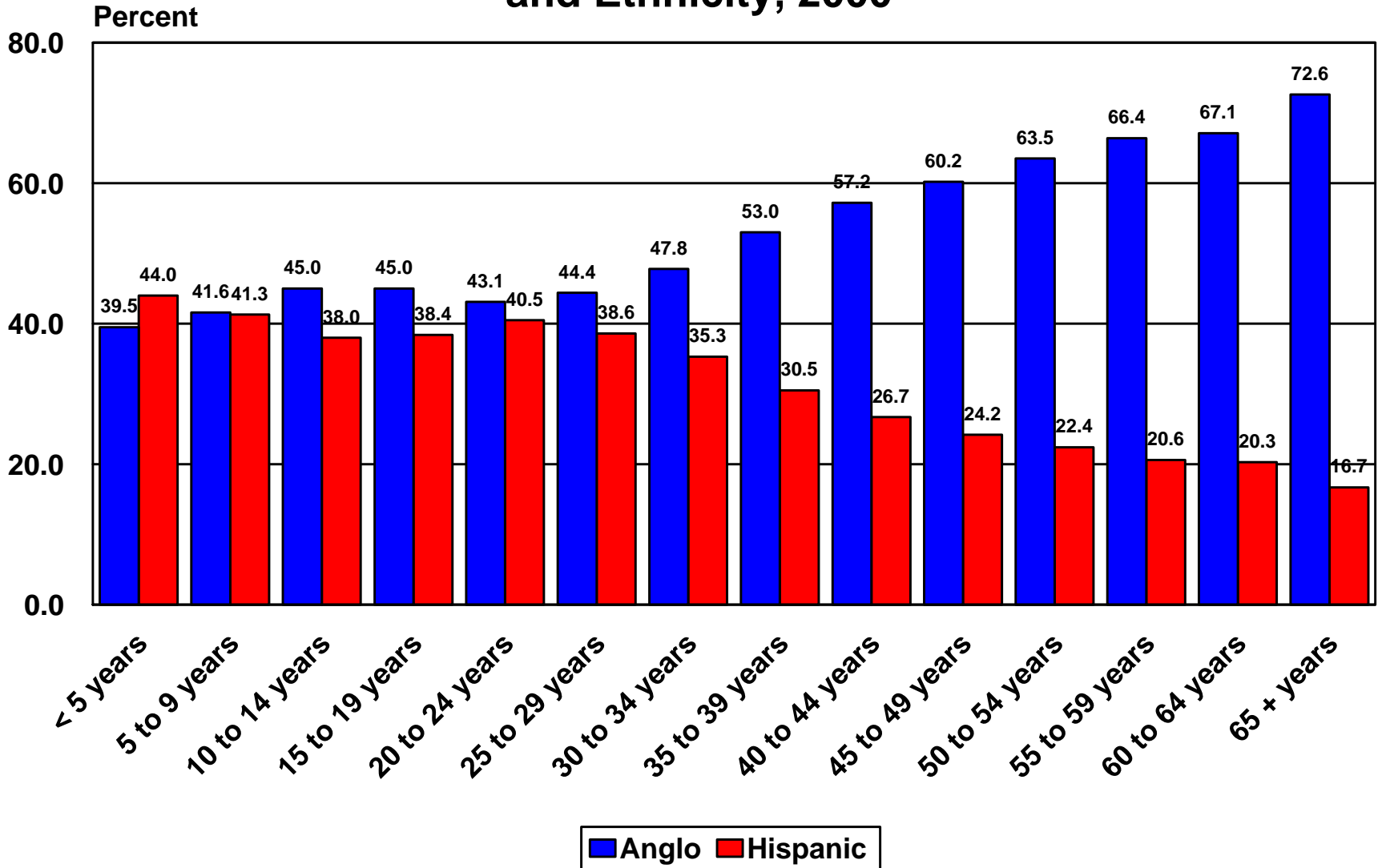
Major Changes in Population Composition (Characteristics)

- **Age**

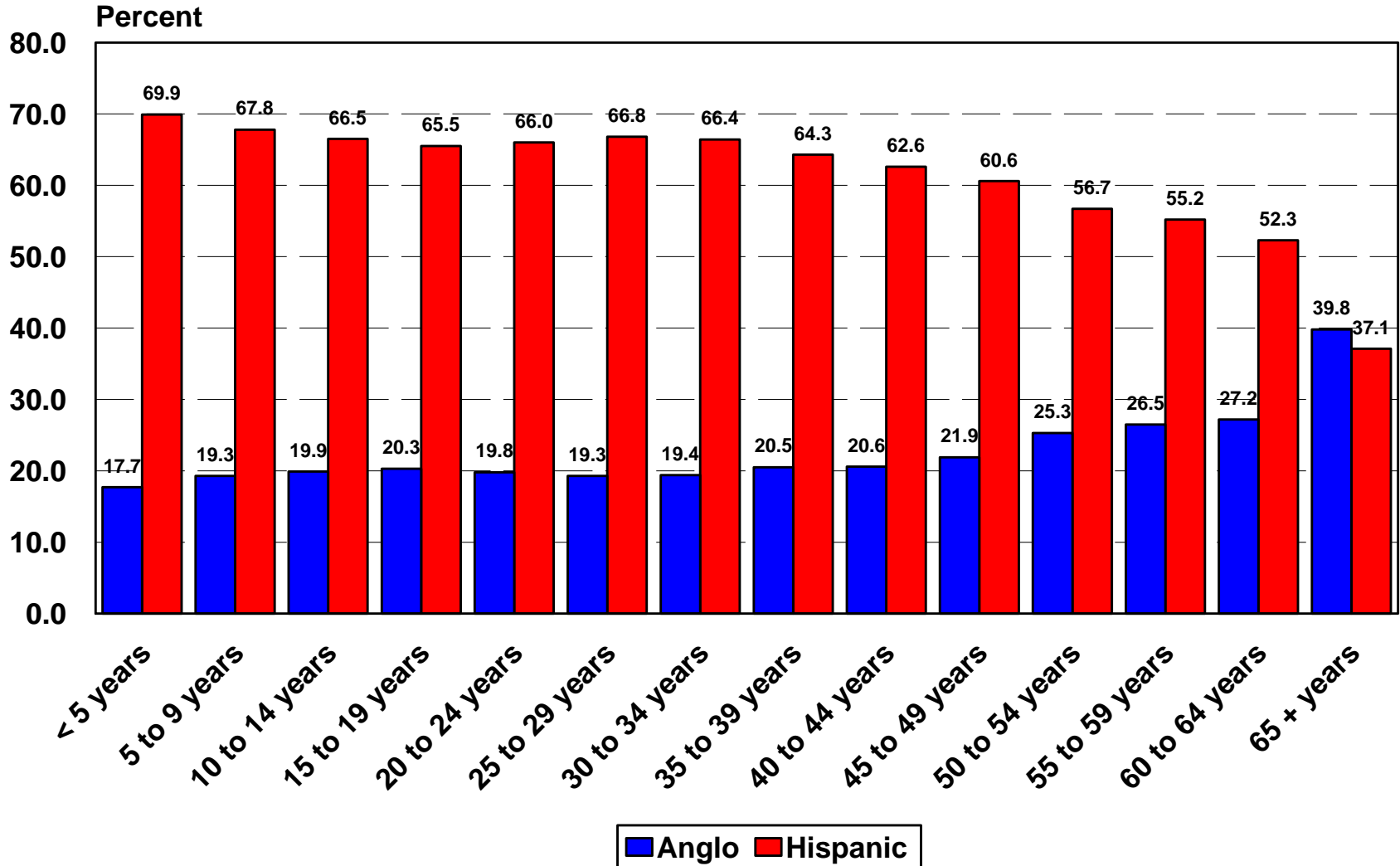
Median Age in the United States and Texas, 1900-2000



Percent of Texas Population by Age Group and Ethnicity, 2000



Percent of Texas Population by Age Group and Ethnicity, 2040*



* Projections are shown for the 1.0 scenario

PROJECTIONS

Population in Texas by Race/Ethnicity in 2000 and Projections of the Population in Texas by Race/Ethnicity from 2010 to 2040

Year	Anglo	Black	Hispanic	Other	Total
2000	11,074,716	2,421,653	6,669,666	685,785	20,851,820

Assuming Rates of Zero Net Migration

2010	11,331,893	2,627,284	8,060,578	783,204	22,802,959
2020	11,381,151	2,771,391	9,336,524	841,641	24,330,707
2030	11,171,425	2,823,276	10,576,281	878,111	25,449,093
2040	10,733,074	2,796,626	11,662,262	893,139	26,085,101

Assuming Rates of Net Migration Equal to One-Half of 1990-2000

2010	11,533,980	2,754,737	9,080,466	961,460	24,330,643
2020	11,796,479	3,052,412	11,882,993	1,273,908	28,005,792
2030	11,789,292	3,268,611	15,140,088	1,632,588	31,830,579
2040	11,525,083	3,403,176	18,804,297	2,028,603	35,761,159

Assuming Rates of Net Migration Equal to 1990-2000

2010	11,740,016	2,888,449	10,252,219	1,177,909	26,058,593
2020	12,227,555	3,361,702	15,226,371	1,921,057	32,736,685
2030	12,442,104	3,783,657	21,871,382	3,020,447	41,117,590
2040	12,376,303	4,140,670	30,604,621	4,585,895	51,707,489

Assuming Rates of Net Migration Equal to 2000-2002

2010	11,587,971	2,826,849	9,877,268	1,117,442	25,409,530
2020	11,908,234	3,217,037	14,090,715	1,726,191	30,942,177
2030	11,960,333	3,539,340	19,449,030	2,569,996	37,518,699
2040	11,749,690	3,786,341	26,153,290	3,698,715	45,388,036

Percent Change for Selected Time Periods for Projected Population in Texas by Racial/Ethnic Status Under Alternative Assumptions of Migration Scenarios

Year	Anglo	Black	Hispanic	Other	Total
<u>Assuming Rates of Zero Net Migration</u>					
2000-2010	2.3	8.5	20.9	14.2	9.4
2010-2020	0.4	5.5	15.8	7.5	6.7
2020-2030	-1.8	1.9	13.3	4.3	4.6
2030-2040	-3.9	-0.9	10.3	1.7	2.5
2000-2040	-3.1	15.5	74.9	30.2	25.1
<u>Assuming Rates of Net Migration Equal to One-Half of 1990-2000</u>					
2000-2010	4.1	13.8	36.1	40.2	16.7
2010-2020	2.3	10.8	30.9	32.5	15.1
2020-2030	-0.1	7.1	27.4	28.2	13.7
2030-2040	-2.2	4.1	24.2	24.3	12.3
2000-2040	4.1	40.5	181.9	195.8	71.5
<u>Assuming Rates of Net Migration Equal to 1990-2000</u>					
2000-2010	6.0	19.3	53.7	71.8	25.0
2010-2020	4.2	16.4	48.5	63.1	25.6
2020-2030	1.8	12.6	43.6	57.2	25.6
2030-2040	-0.5	9.4	39.9	51.8	25.8
2000-2040	11.8	71.0	358.9	568.7	148.0
<u>Assuming Rates of Net Migration Equal to 2000-2002</u>					
2000-2010	4.6	16.7	48.1	62.9	21.9
2010-2020	2.8	13.8	42.7	54.5	21.8
2020-2030	0.4	10.0	38.0	48.9	21.3
2030-2040	-1.8	7.0	34.5	43.9	21.0
2000-2040	6.1	56.4	292.1	439.3	117.7

**Percent of Population in Texas by Race/Ethnicity in 2000
and Projections of the Percent of the Population in Texas
by Race/Ethnicity from 2010 to 2040**

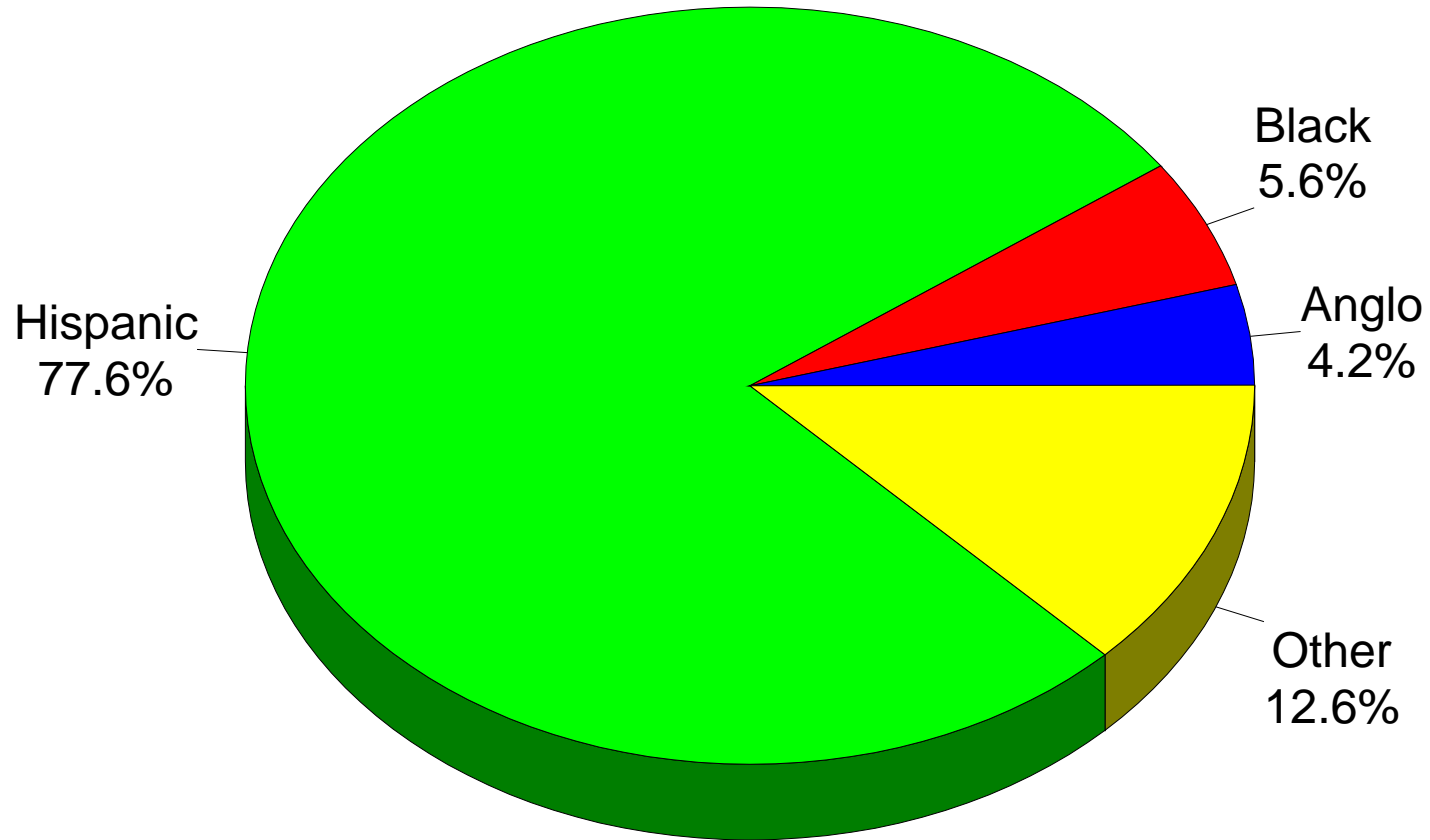
Year	Anglo	Black	Hispanic	Other
2000	53.1	11.6	32.0	3.3
<u>Assuming Rates of Zero Net Migration</u>				
2010	49.8	11.5	35.3	3.4
2020	46.7	11.4	38.4	3.5
2030	43.8	11.1	41.6	3.5
2040	41.2	10.7	44.7	3.4
<u>Assuming Rates of Net Migration Equal to One-Half of 1990-2000</u>				
2010	47.4	11.3	37.3	4.0
2020	42.2	10.9	42.4	4.5
2030	37.0	10.3	47.6	5.1
2040	32.2	9.5	52.6	5.7
<u>Assuming Rates of Net Migration Equal to 1990-2000</u>				
2010	45.1	11.1	39.3	4.5
2020	37.3	10.3	46.5	5.9
2030	30.3	9.2	53.2	7.3
2040	23.9	8.0	59.2	8.9
<u>Assuming Rates of Net Migration Equal to 2000-2002</u>				
2010	45.6	11.1	38.9	4.4
2020	38.5	10.4	45.5	5.6
2030	32.0	9.4	51.8	6.8
2040	26.0	8.3	57.6	8.1

**Percent of the Projections of the Population by
Race/Ethnicity and Age Groups in Texas from 2000-2040
Under Alternative Migration Scenarios**

Age Group	Anglo	Black	Hispanic	Other	Total
<u>All Scenarios</u>					
<u>2000</u>					
<18	23.0	31.7	35.8	26.1	28.2
18-24	8.8	11.2	13.2	11.2	10.6
25-44	30.1	32.1	31.8	37.7	31.1
45-64	24.4	17.7	14.0	20.1	20.2
65+	13.7	7.3	5.2	4.9	9.9
<u>Assuming Rates of Zero Net Migration</u>					
<u>2020</u>					
<18	20.1	24.8	32.0	21.2	25.2
18-24	8.2	10.2	11.1	9.1	9.6
25-44	24.7	29.3	26.9	24.0	26.1
45-64	27.4	25.0	21.5	29.9	24.9
65+	19.6	10.7	8.5	15.8	14.2
<u>2040</u>					
<18	17.4	19.9	27.5	16.8	22.2
18-24	7.6	8.8	10.0	6.5	8.7
25-44	24.1	27.6	27.1	23.7	25.9
45-64	24.9	26.5	20.6	22.1	23.0
65+	26.0	17.2	14.8	30.9	20.2

(Continued)

Projected Percent of Net Change Attributable to Each Race/Ethnicity Group for 2000-2040*

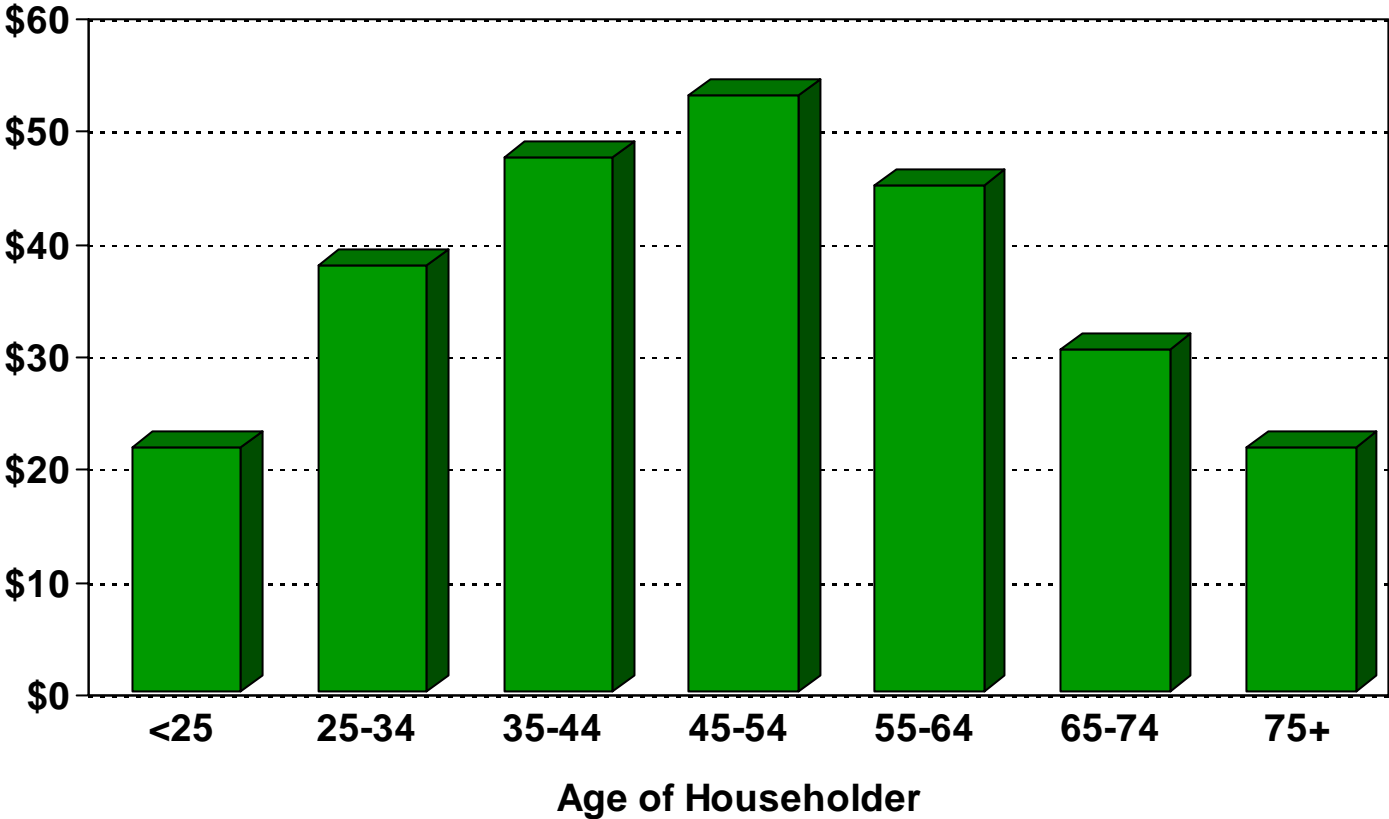


*Using U.S. Census count for 2000 and Texas State Data Center 1.0 population projection scenario for 2040.

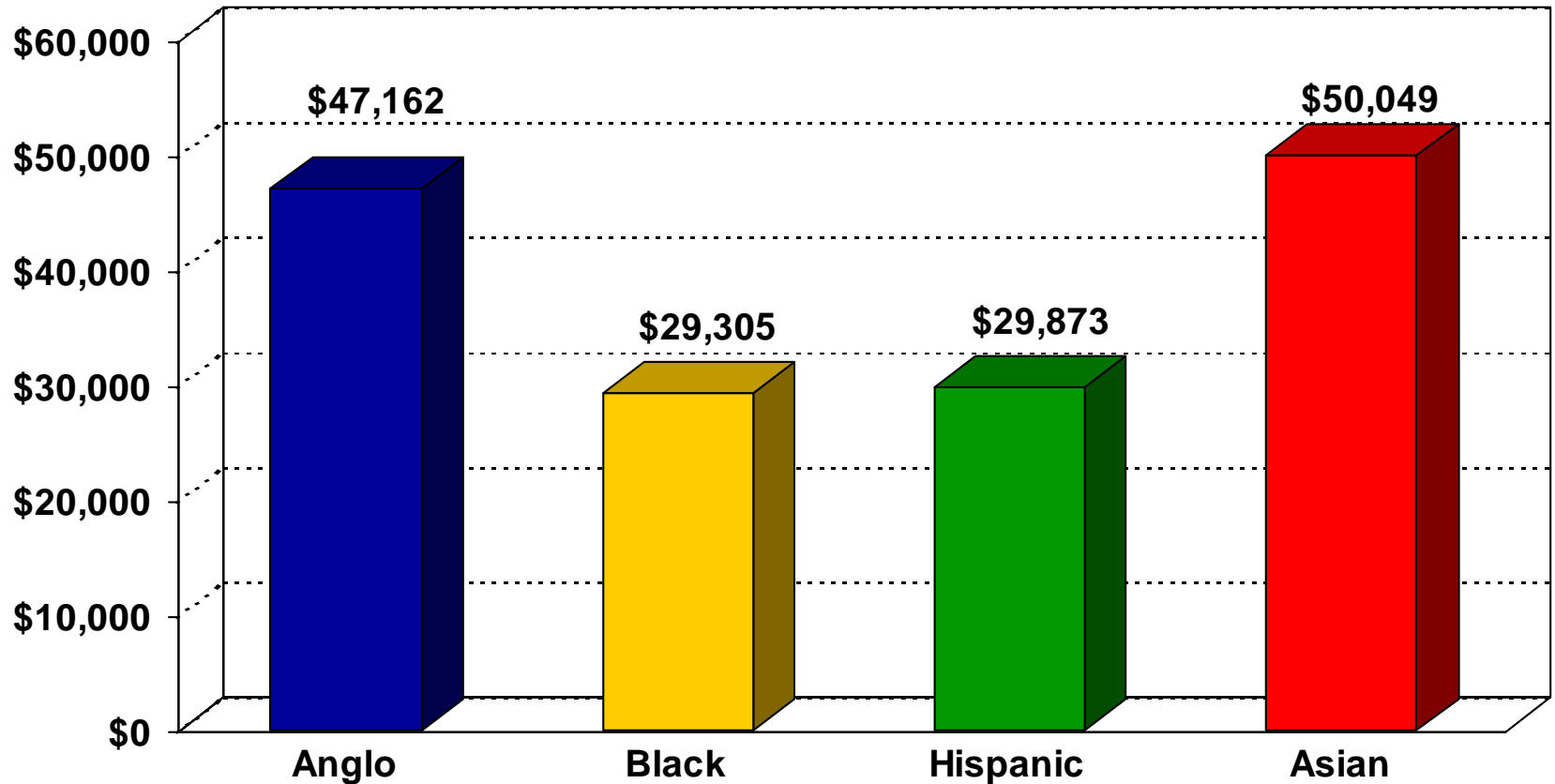
POPULATION CHARACTERISTICS AND SOCIOECONOMIC CONDITIONS

Median Household Income in 1999 in Texas by Age of Householder

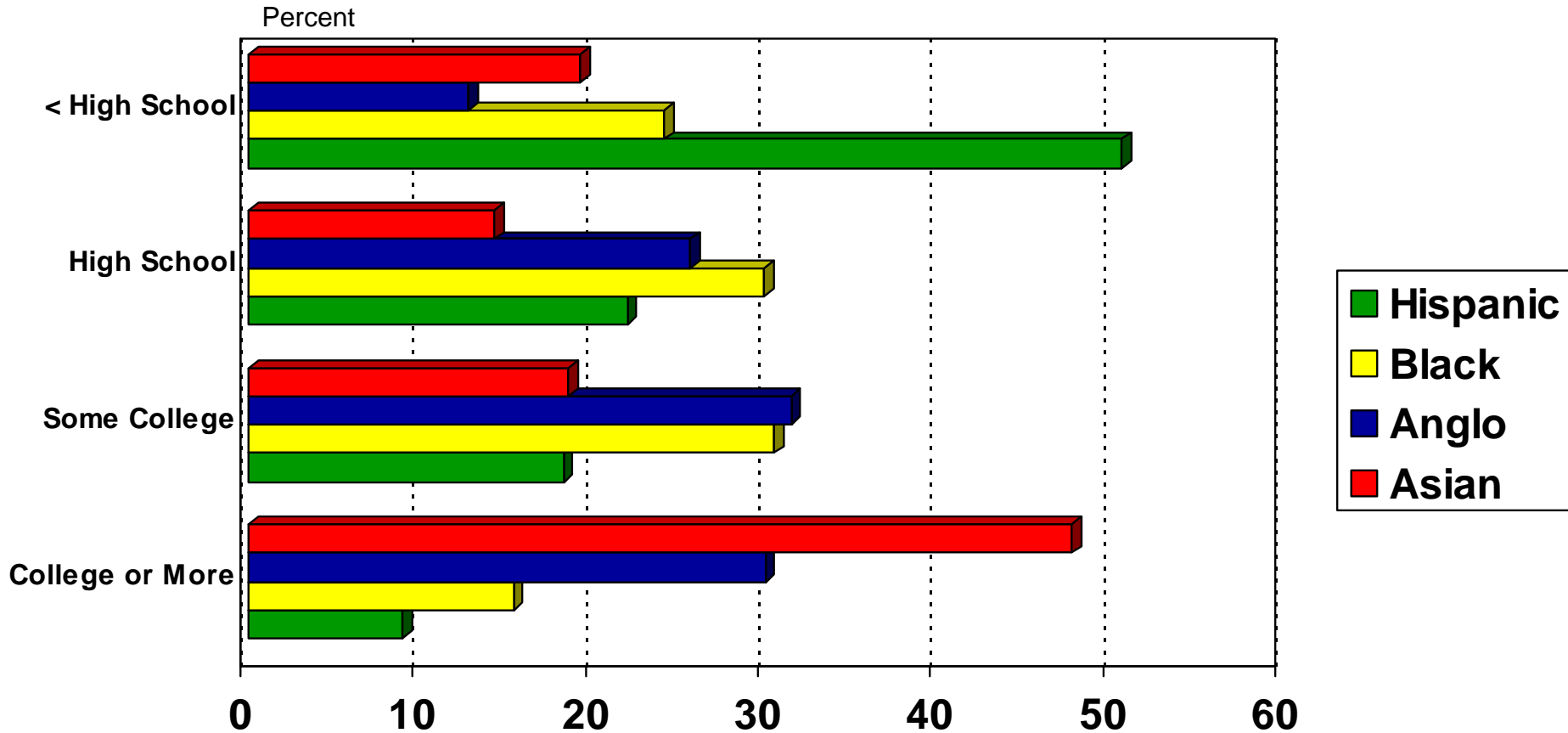
Thousands



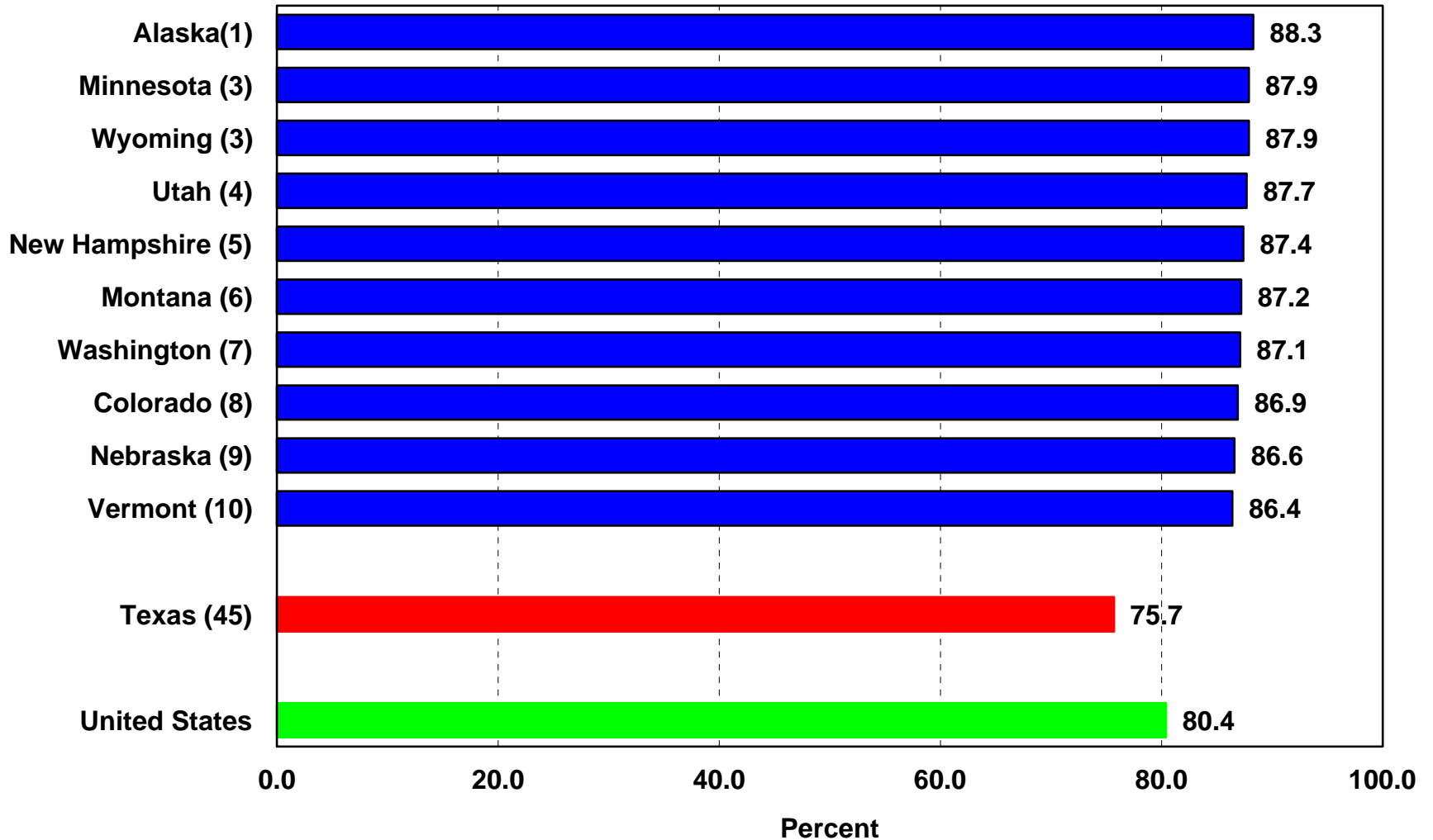
Median Household Income In 1999 in Texas by Race/Ethnicity of Householder



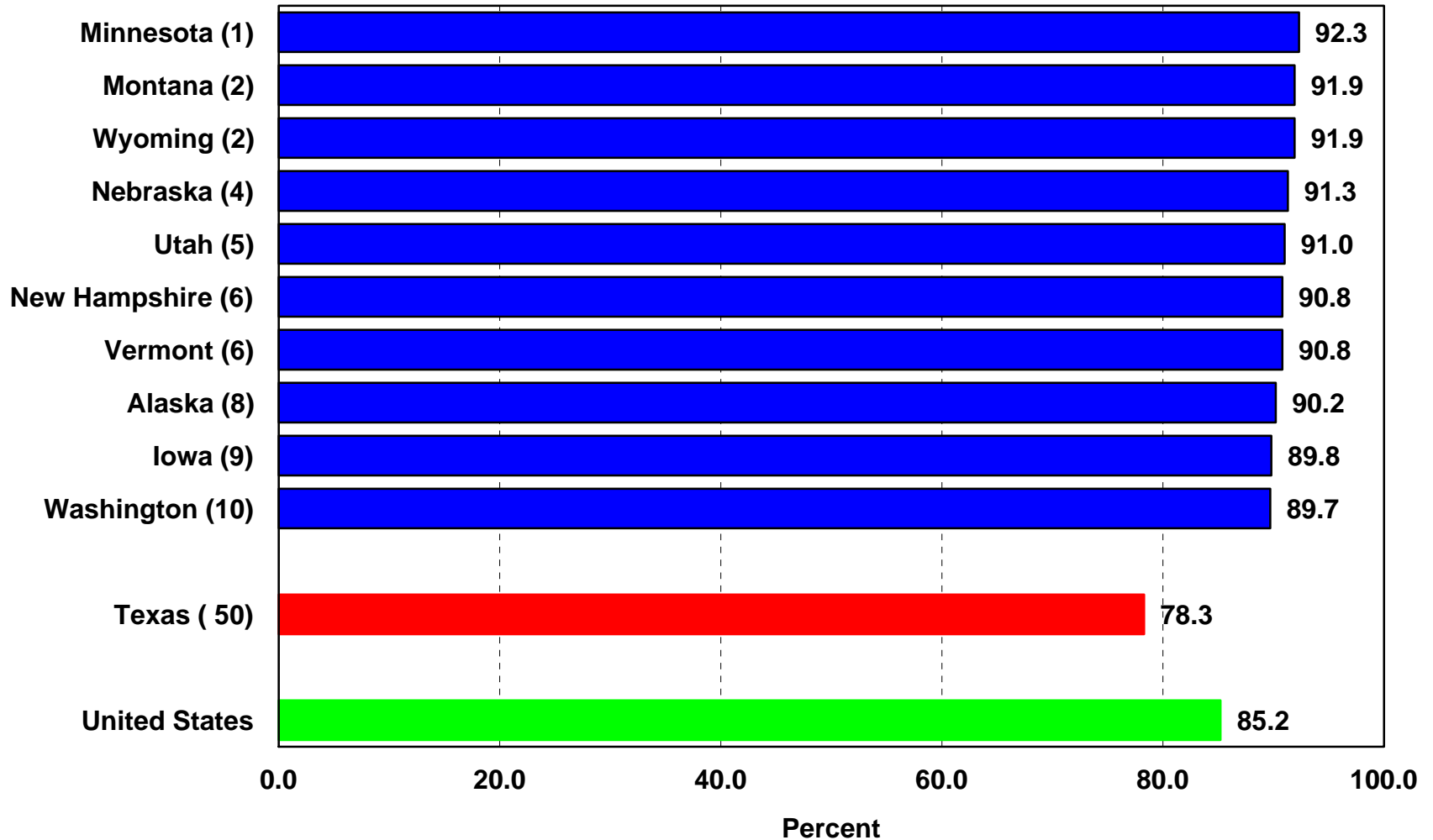
Educational Attainment in 2000 in Texas for Persons 25+ Years of Age By Race/Ethnicity



States Ranked by Percent High School Graduates + in the Population 25 Years of Age or Older, 2000

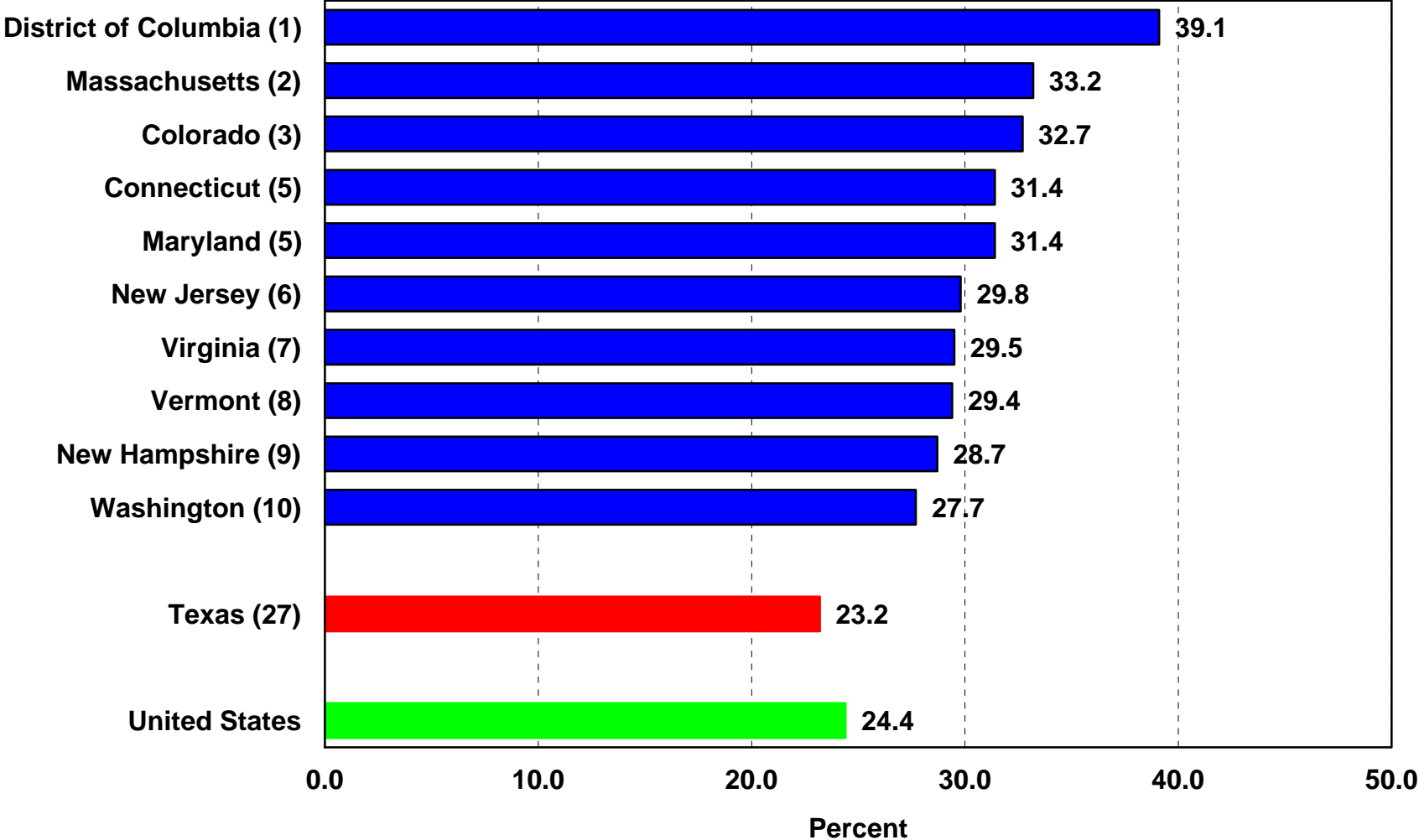


States Ranked by Percent High School Graduates + in the Population 25 Years of Age or Older, 2004

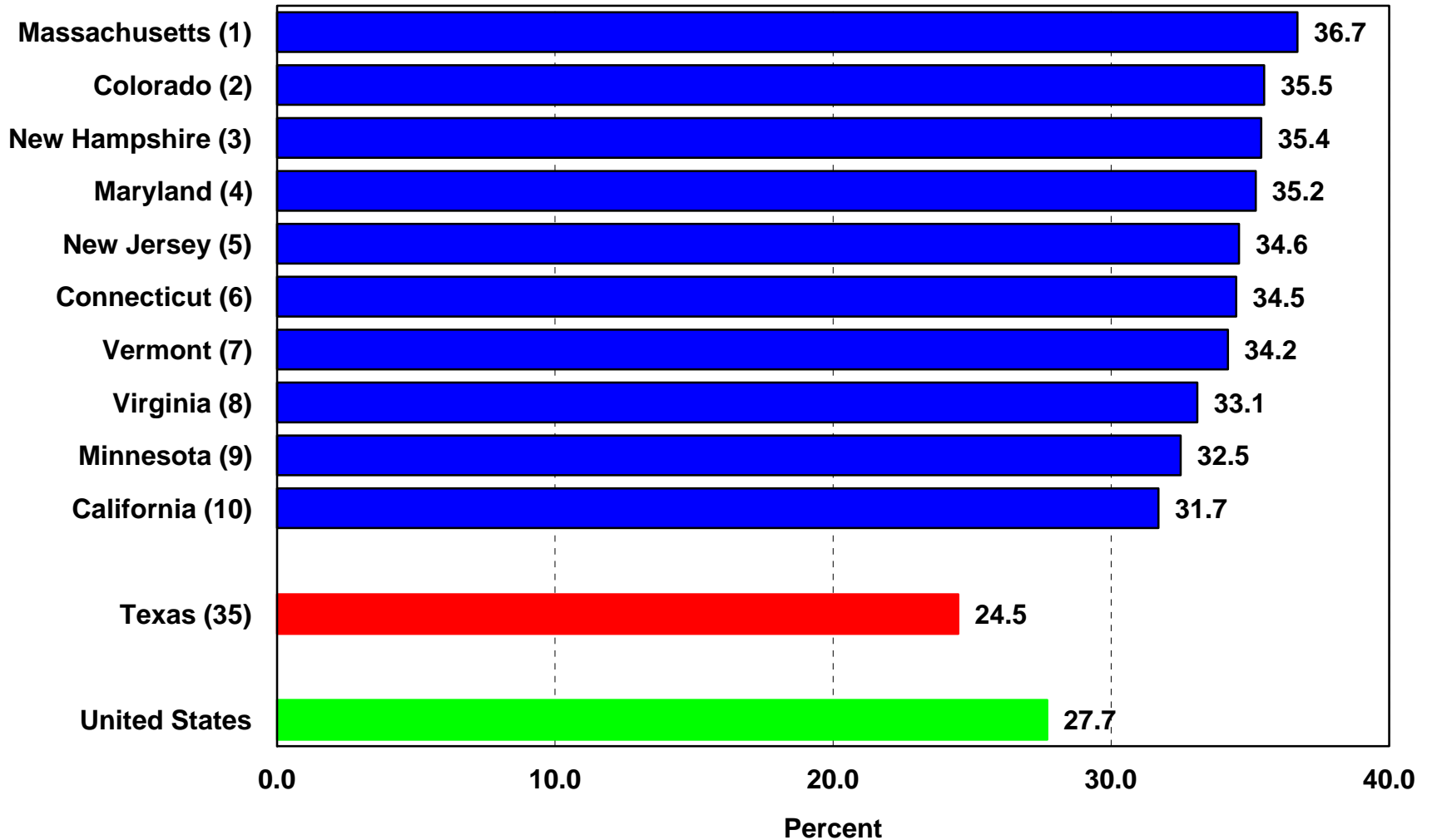


Source: U.S. Census Bureau. Current Population Survey (CPS), 2004 Annual Social and Economic Supplement

States Ranked by Percent College Graduates + in the Population 25 Years of Age or Older, 2000



States Ranked by Percent College Graduates + in the Population 25 Years of Age or Older, 2004



Source: U.S. Census Bureau. Current Population Survey (CPS), 2004 Annual Social and Economic Supplement



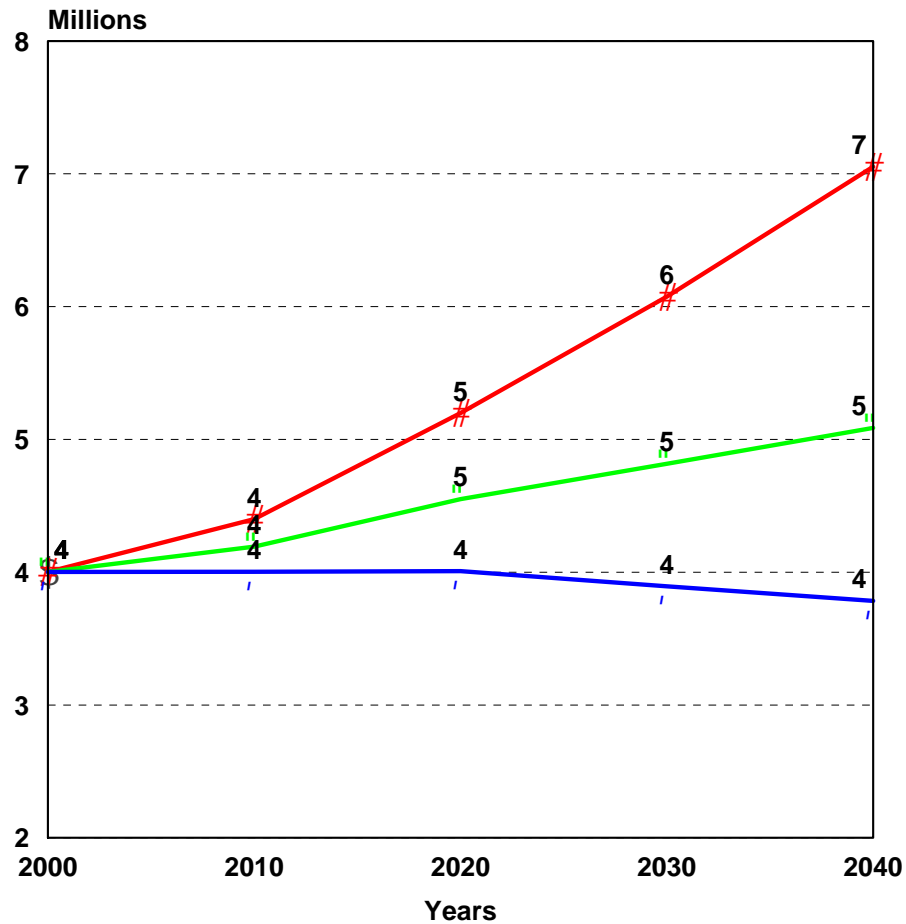
**The Institute
for Demographic
and
Socioeconomic
Research**

The Texas Challenge in the Twenty- First Century: Implications of Population Change for the Future of Texas

**by
Steve H. Murdock**

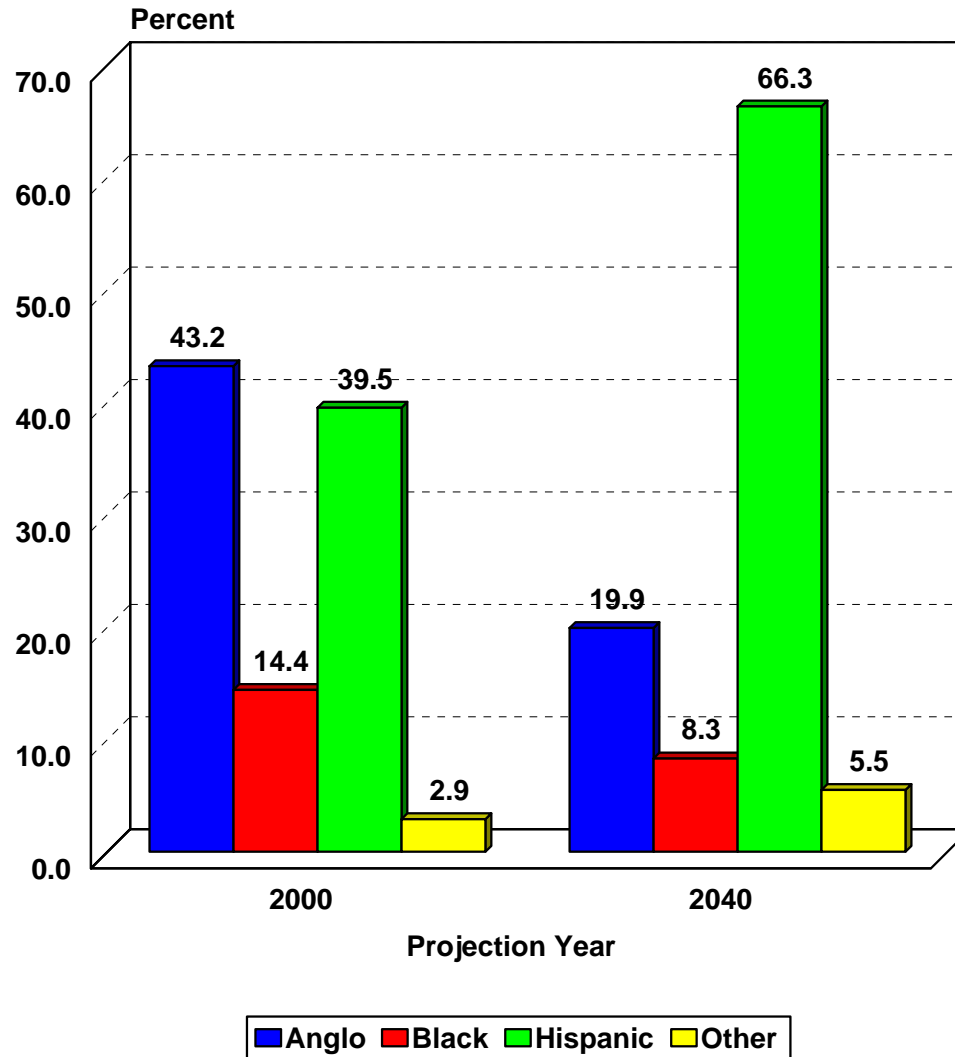
**The Institute for Demographic and
Socioeconomic Research
The University of Texas at San Antonio**

Enrollment in Public Elementary and Secondary Schools in Texas for all Scenarios, 2000-2040



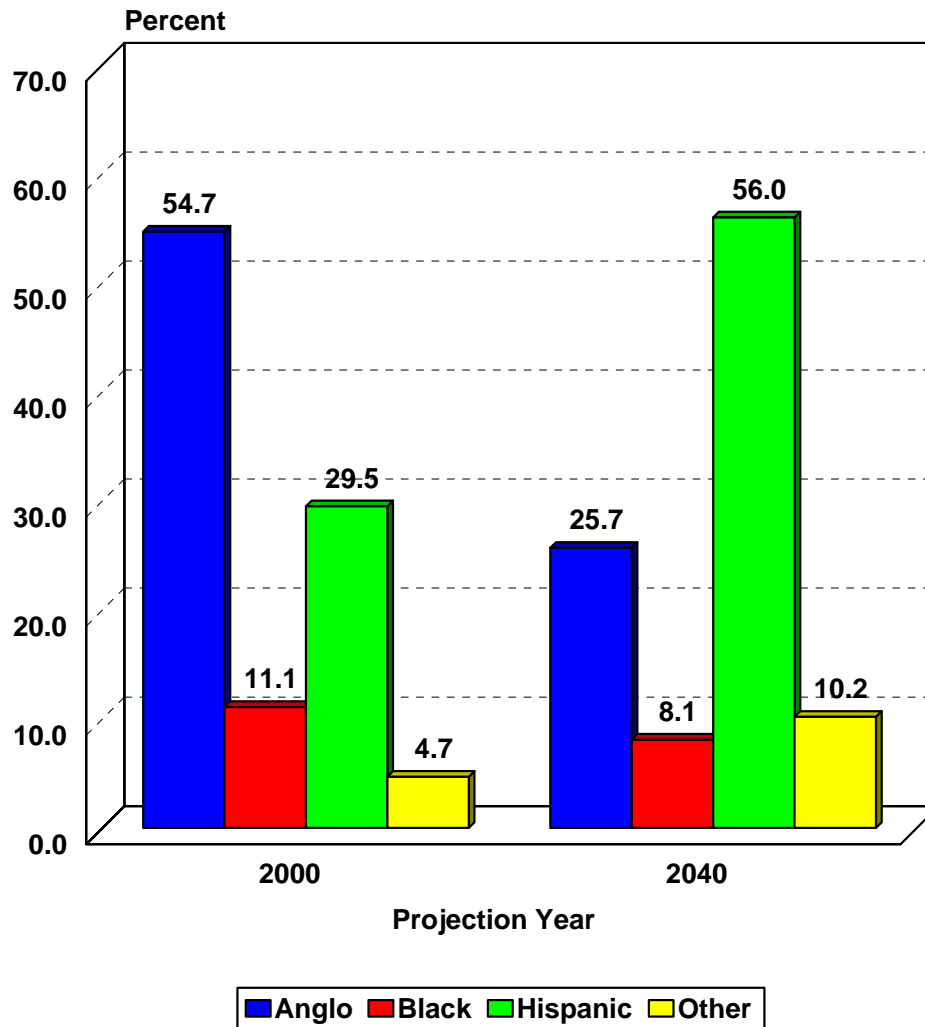
— 0.0 Scenario — 0.5 Scenario # 1.0 Scenario \$ Census Count

Projected Percent of Public Elementary and Secondary Enrollment by Race/Ethnicity in 2000 and Projections for 2040*



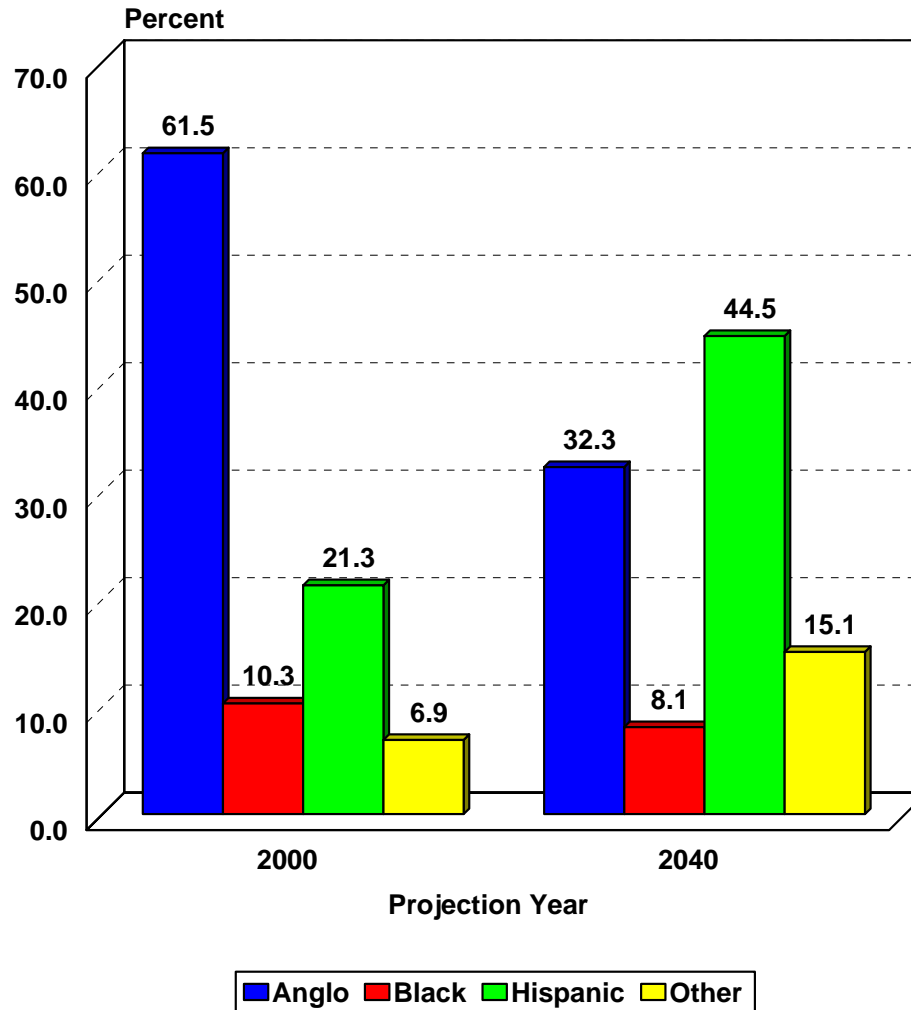
* Projections are shown for the 1.0 scenario

Projected Percent of Public Community College Enrollment by Race/Ethnicity in 2000 and Projections for 2040*



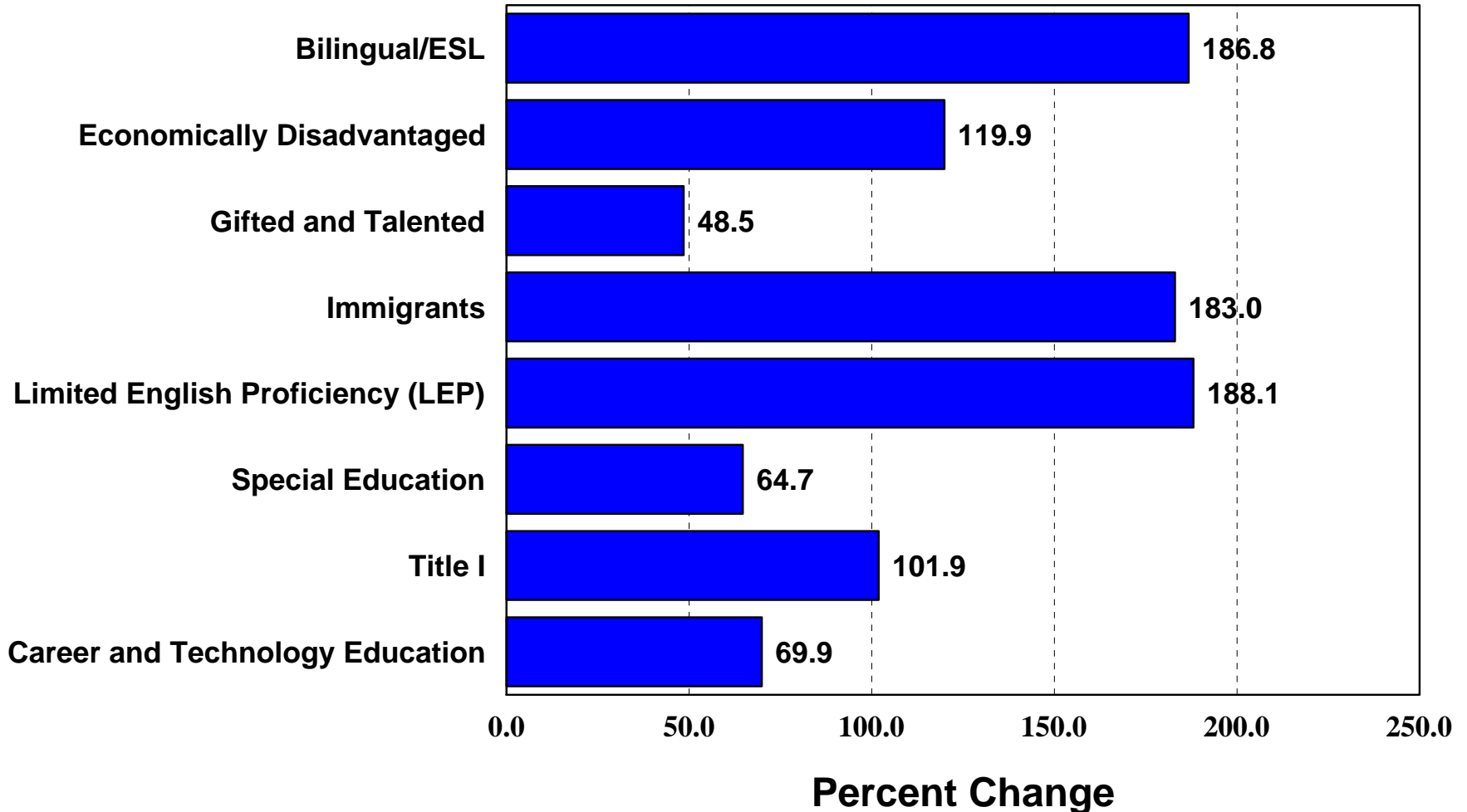
* Projections are shown for the 1.0 scenario

Projected Percent of Public University Enrollment by Race/Ethnicity in 2000 and Projections for 2040*



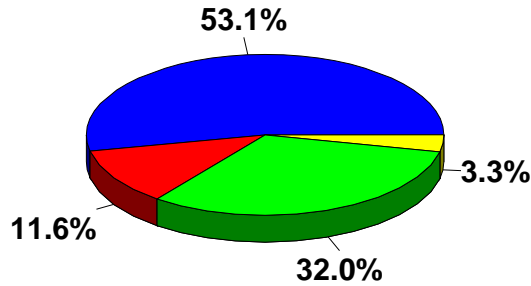
* Projections are shown for the 1.0 scenario

Percent Change in Enrollment in Selected Elementary and Secondary School Programs in Texas, 2000 to 2040*

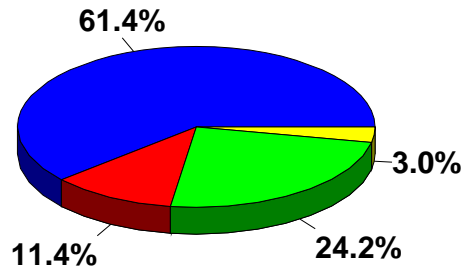


*Projections are for the 1.0 Scenario

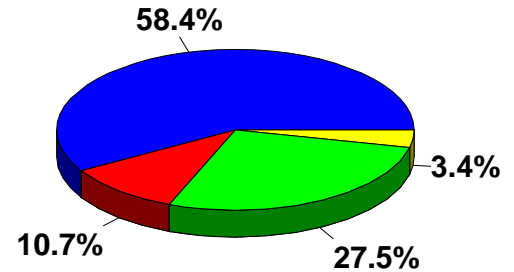
Ethnic Diversity of the Population, Householders, and Labor Force in Texas, 2000 and 2040*



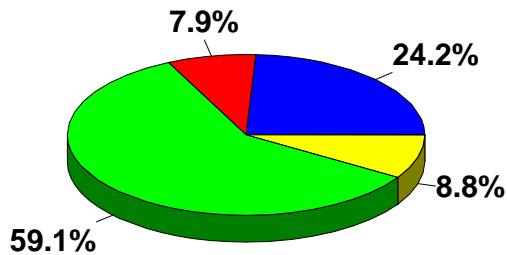
2000 Population



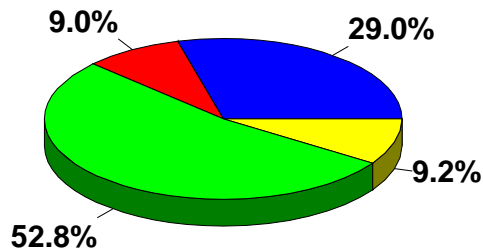
2000 Householders



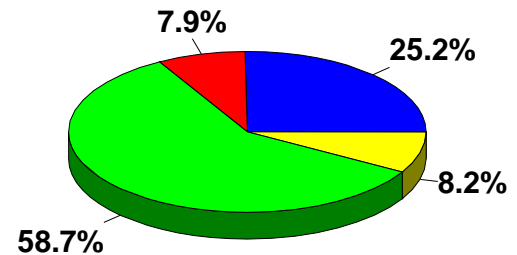
2000 Civilian Labor Force



2040 Population



2040 Householders

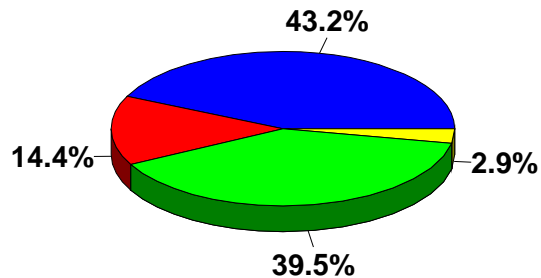


2040 Civilian Labor Force

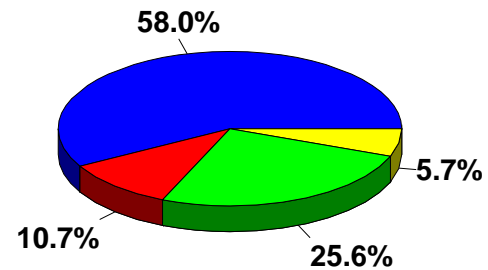


* Projections are shown for the 1.0 scenario

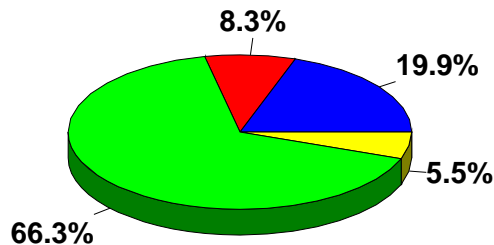
Ethnic Diversity of the Population Enrolled in Elementary and Secondary Schools and Colleges in Texas, 2000 and 2040*



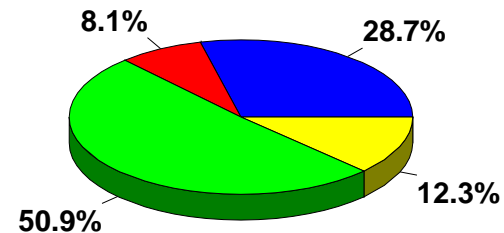
2000 Public Elementary and Secondary



2000 Public Colleges and Universities



2040 Public Elementary and Secondary

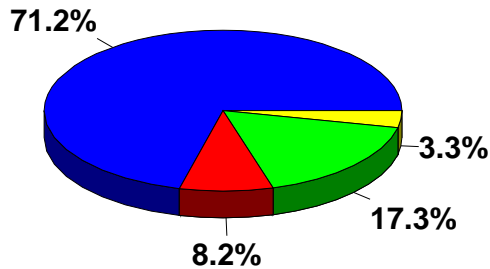


2040 Public Colleges and Universities

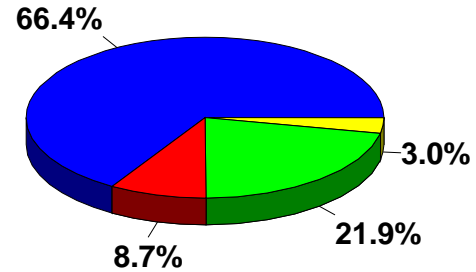


* Projections are shown for the 1.0 scenario

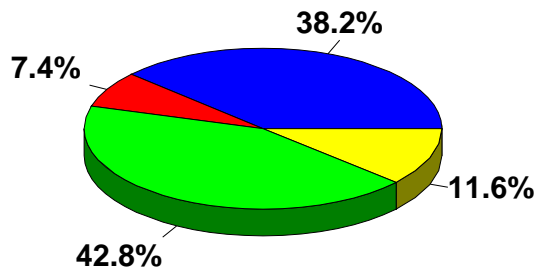
Ethnic Diversity of Household Income and Consumer Expenditures in Texas, 2000 and 2040*



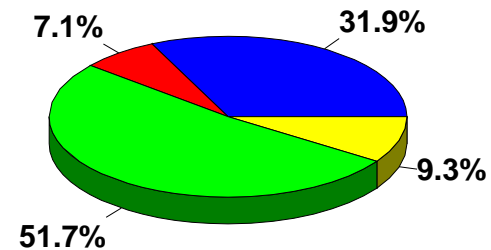
2000 Aggregate Household Income



2000 Consumer Expenditures



2040 Aggregate Household Income

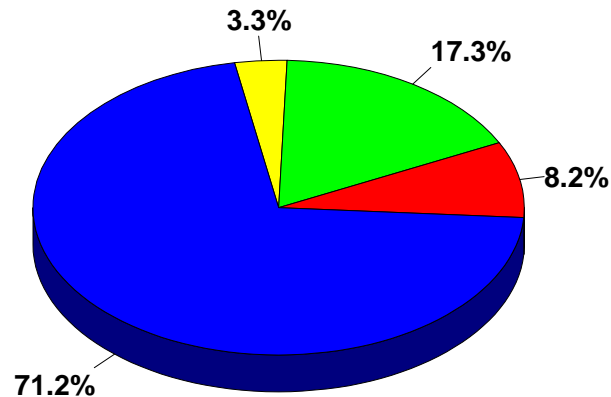


2040 Consumer Expenditures

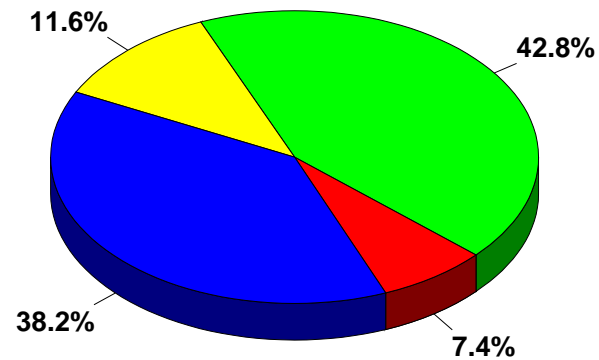


* Projections are shown for the 1.0 scenario

State Tax Revenues in Texas Proportioned by Race/Ethnicity in 2000 and Projections to 2040* Assuming 2000 Decile Tax Rates



2000
Tax Revenues

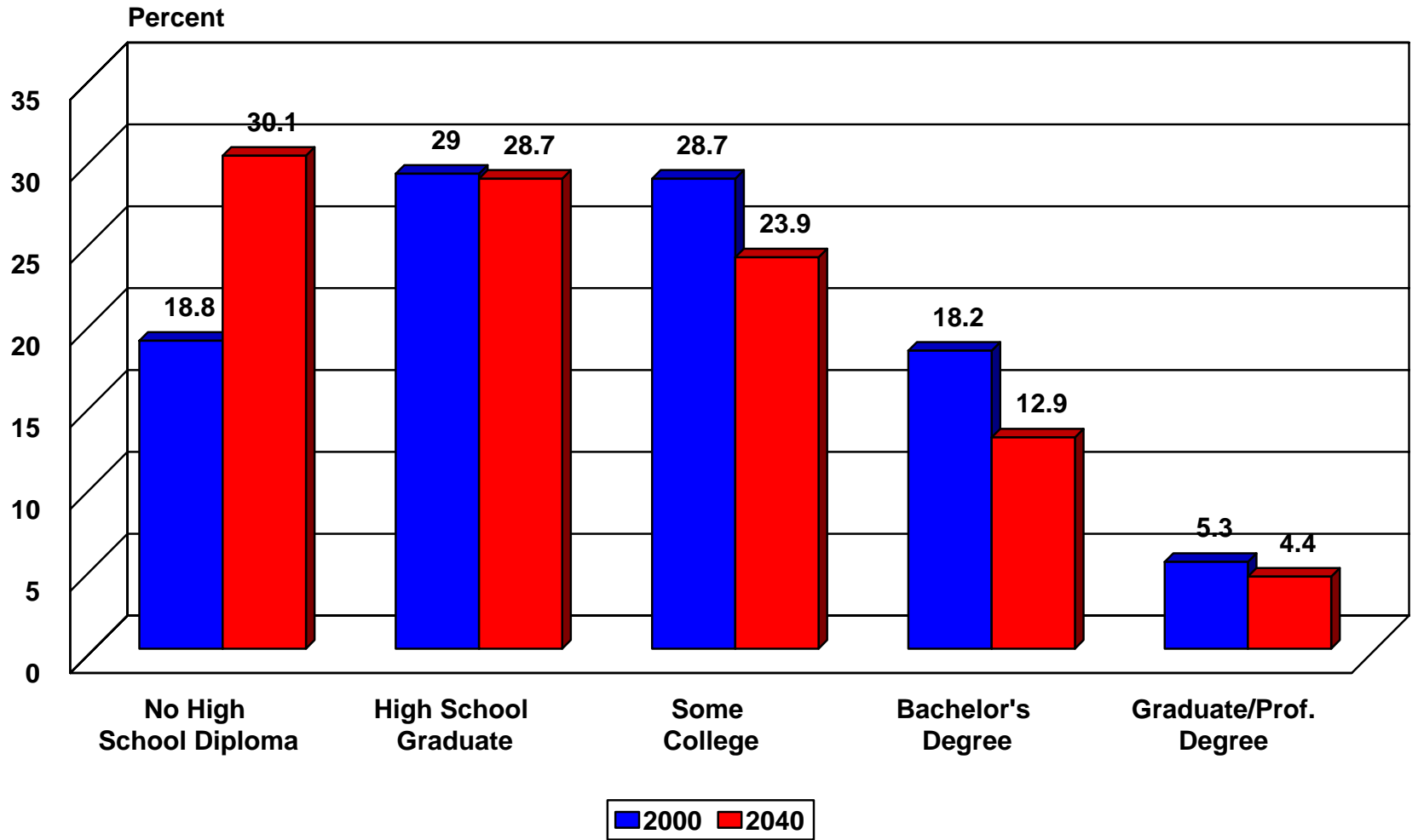


2040* Projected
Tax Revenues



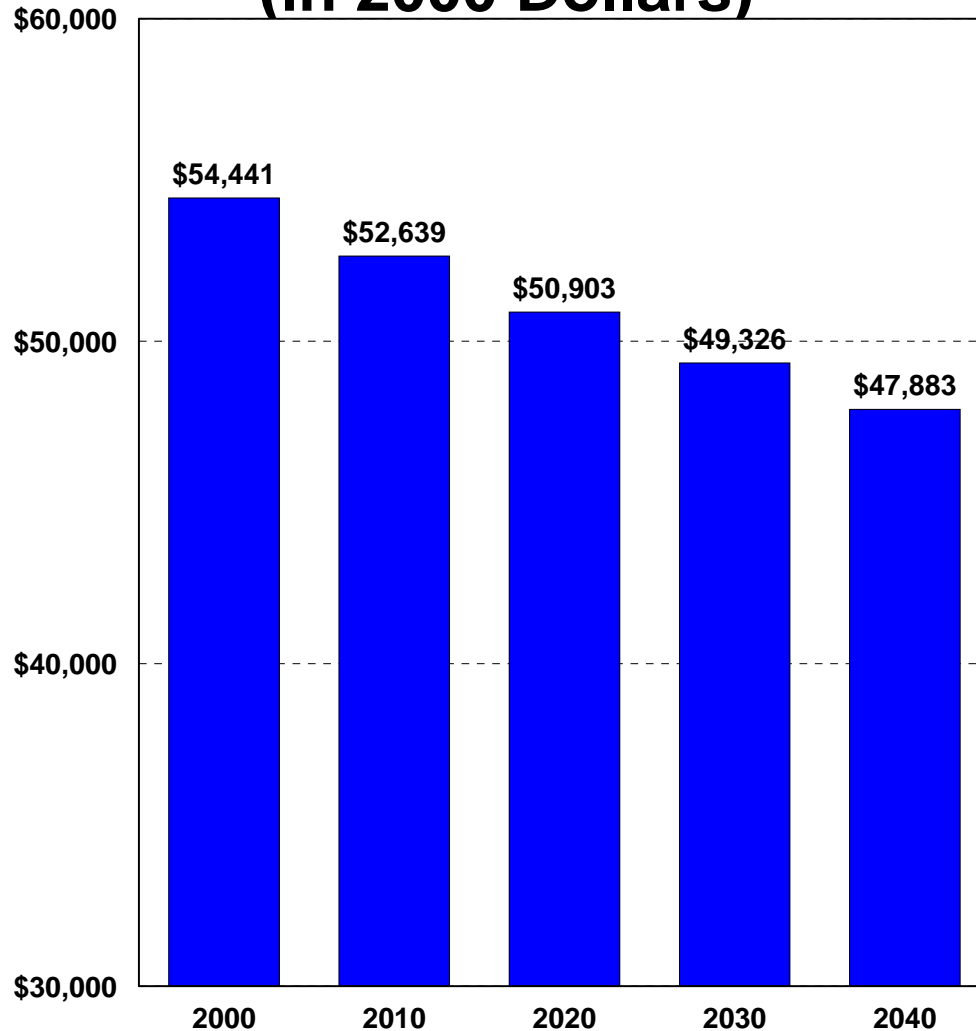
*Projections are shown for the 1.0 scenario

Projected Percent of Labor Force by Educational Attainment in Texas, 2000 and 2040



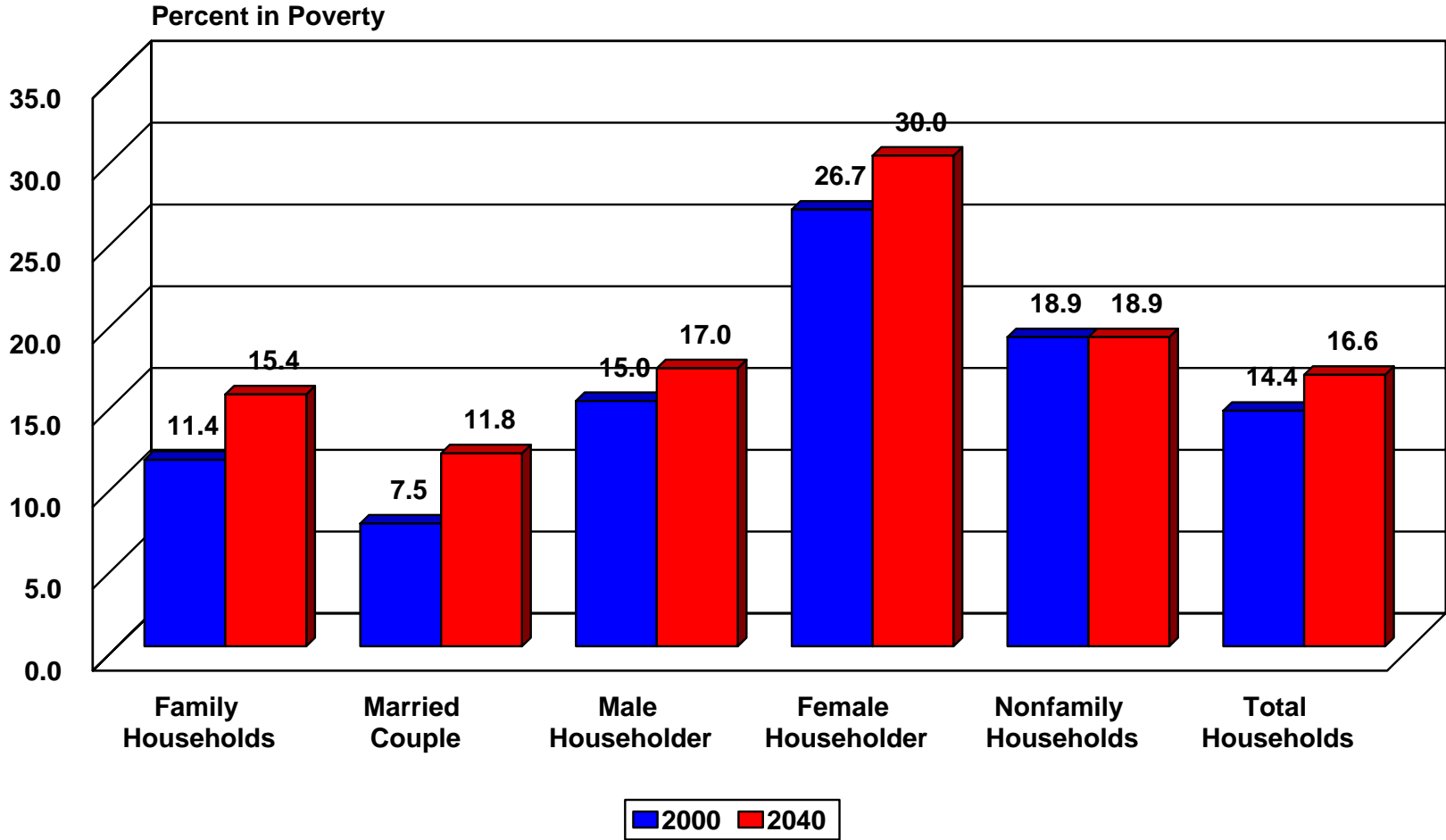
* Projections are shown for the 1.0 scenario

Average Household Income in Texas, 2000-2040* (in 2000 Dollars)



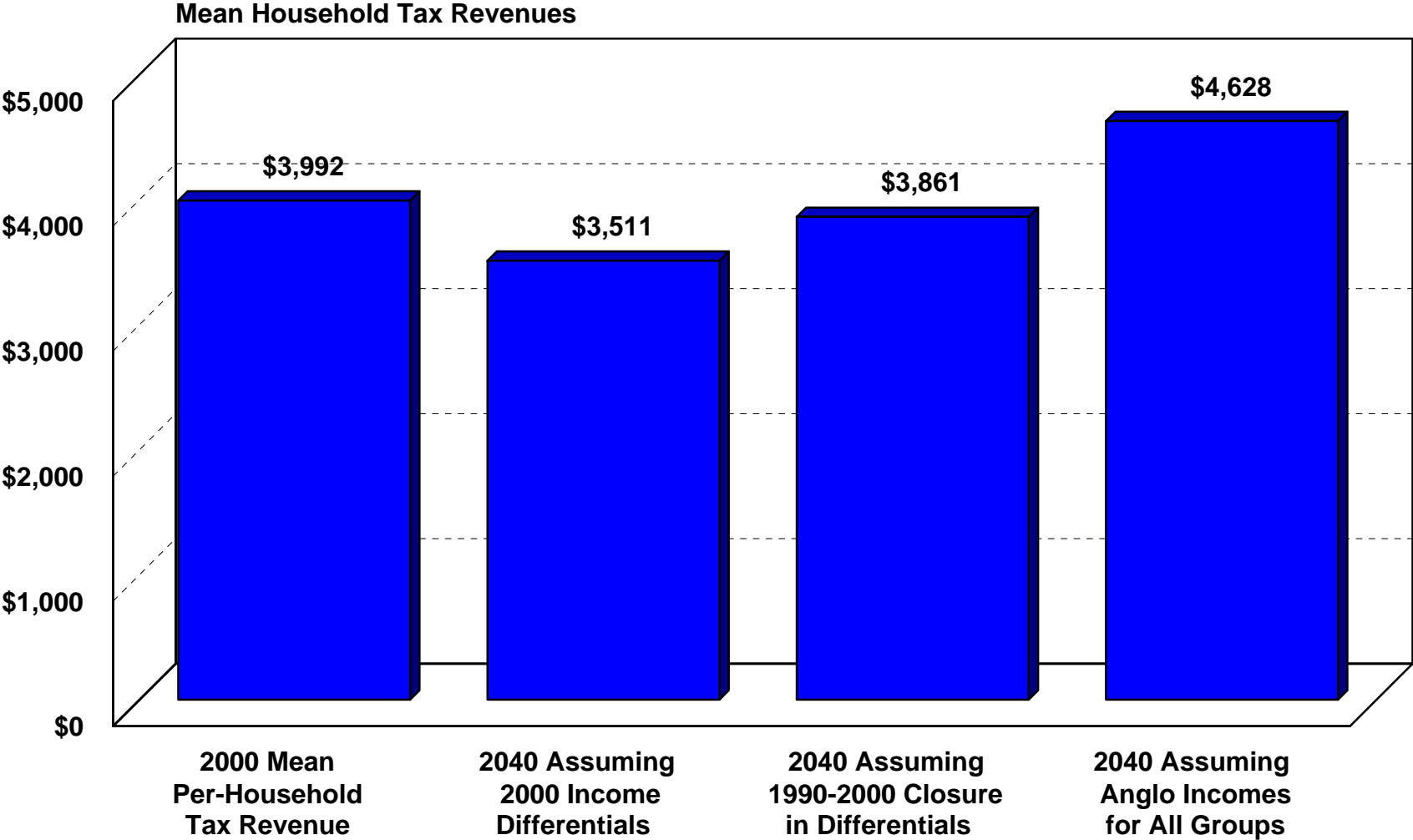
* Projections are shown for the 1.0 scenario

Projected Percent of Households in Poverty by Family Type in Texas, 2000 and 2040



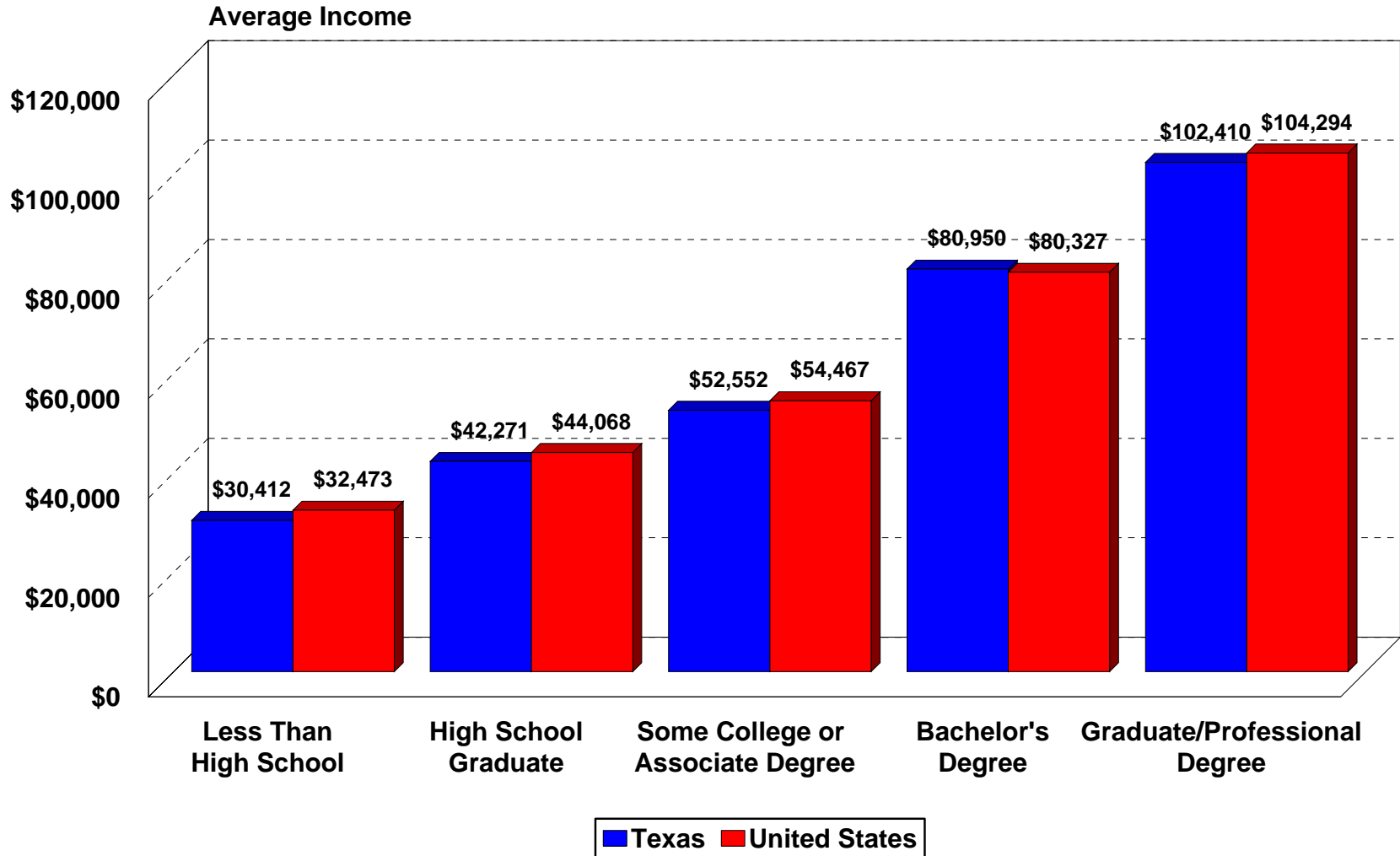
* Projections are shown for the 1.0 scenario

Mean Per-Household State Tax Revenues in Texas in 2000 and Projections for 2040 Assuming 2000 Rates, 1990-2000 Rates of Closure between Anglo-Black and Anglo-Hispanic Incomes, and Anglo Income Levels for All Race/Ethnicity Groups*



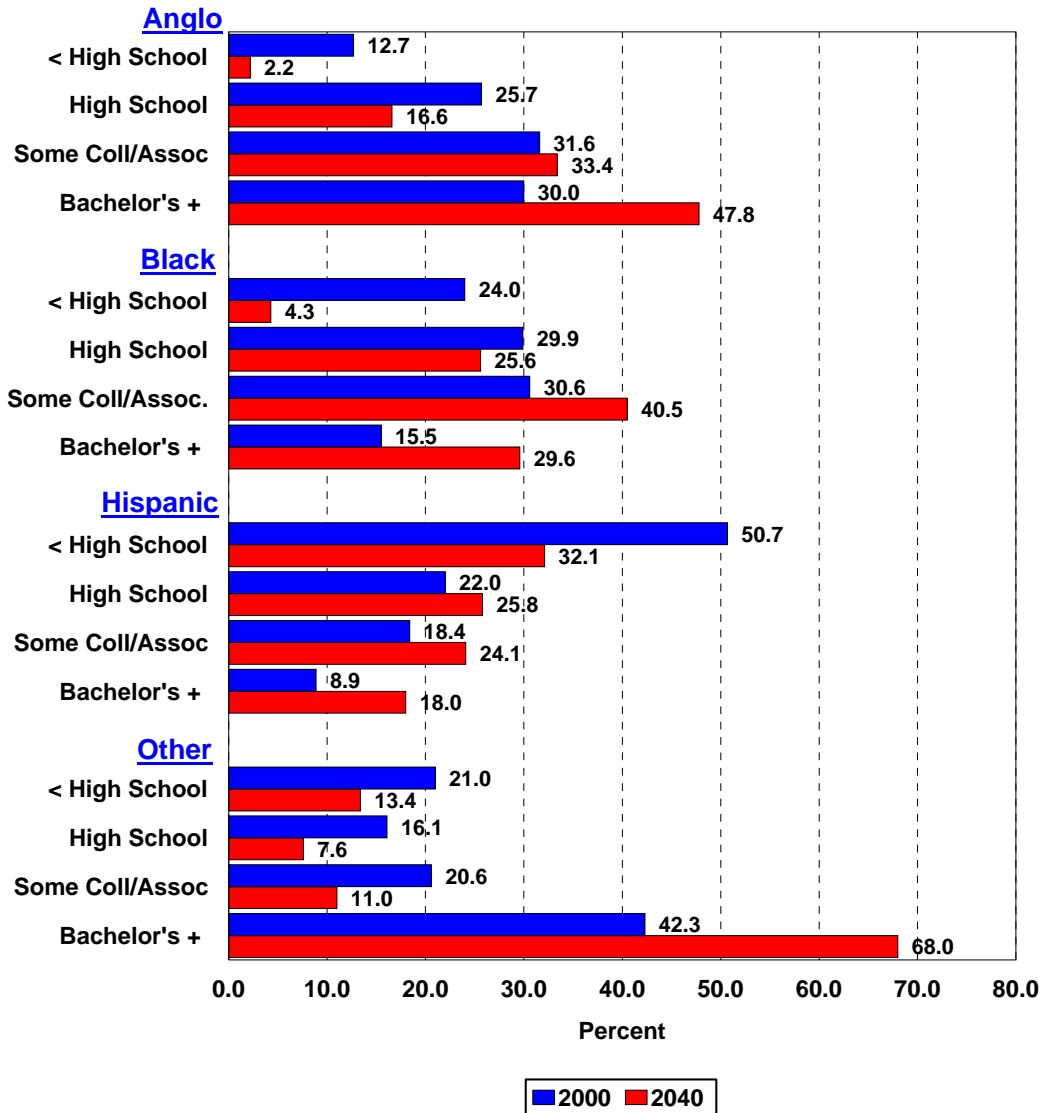
* Projections are shown for the 1.0 Scenario

Average Annual Household Income in Texas and the United States by Educational Attainment of Householder in 2000*



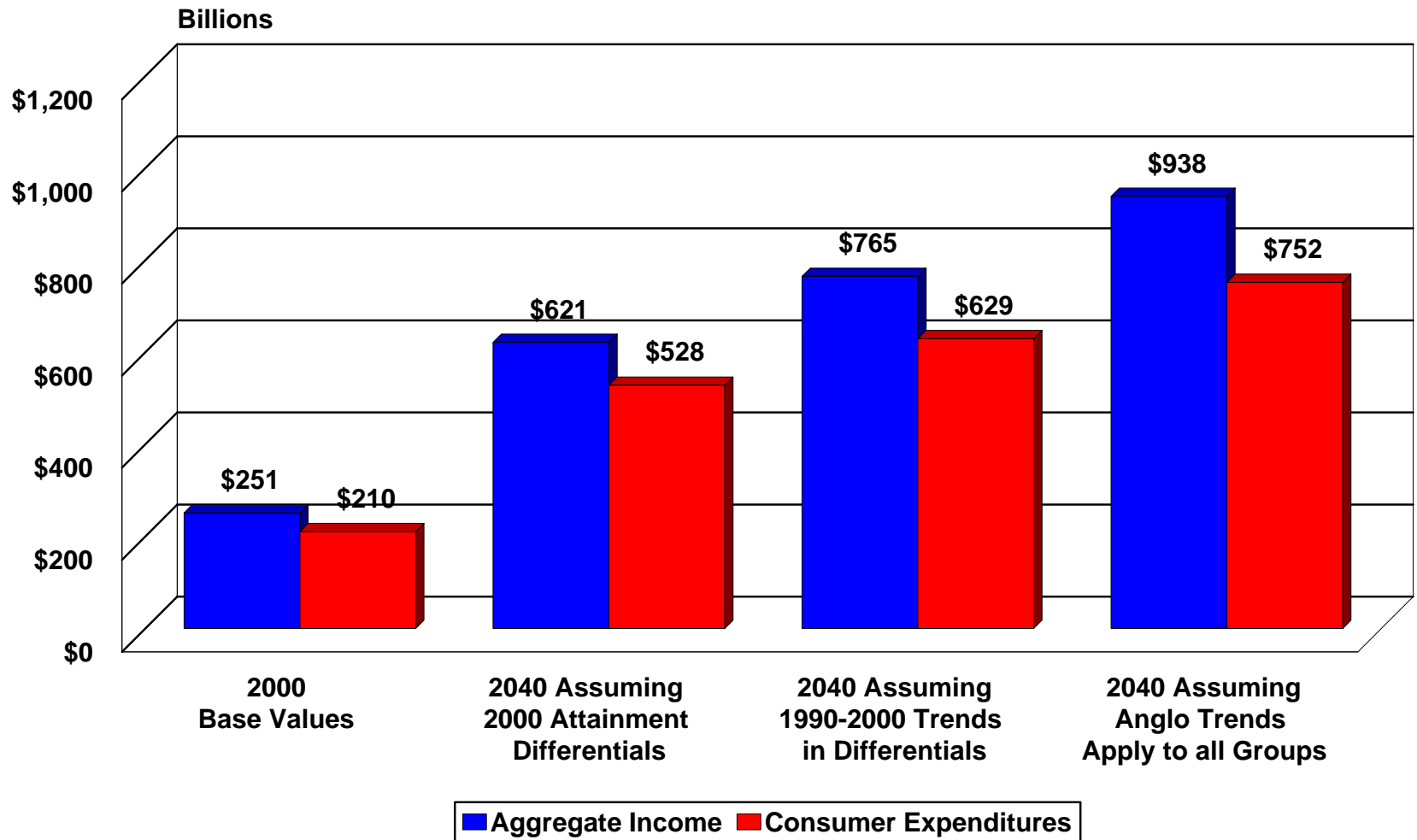
*From Census 2000 Public Use Microdata Sample (1% File)

Percent of Persons 25 Years of Age or Older by Level of Educational Attainment and Race/Ethnicity in 2000 and Projected to 2040* Assuming 1990-2000 Trends in Educational Attainment Rates



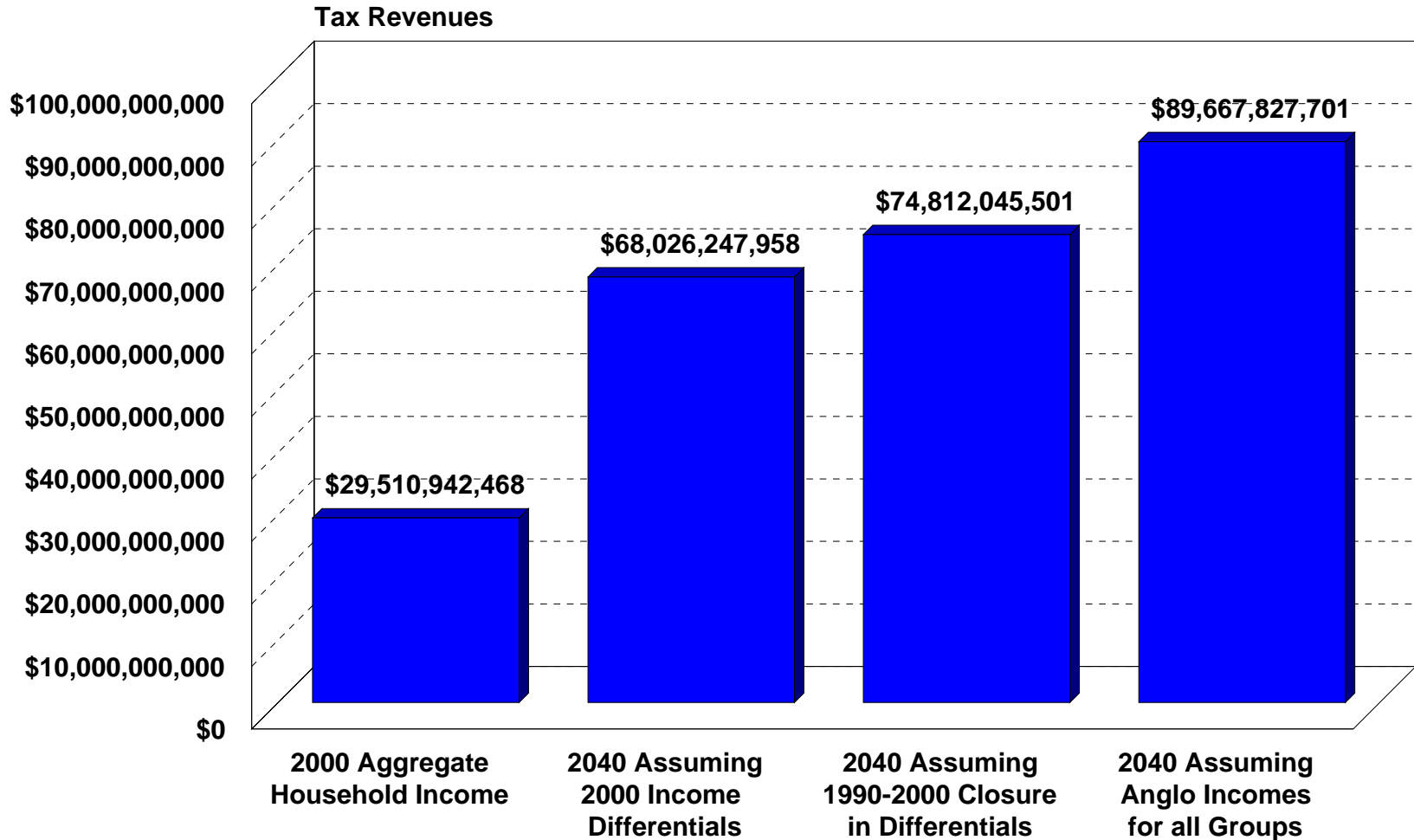
*Projections are shown for the 1.0 scenario

Aggregate Income and Consumer Expenditures for Population 25 Years of Age or Older in Texas in 2000 and Projected Under Alternative Educational Attainment Assumptions for 2040*



*Projections are shown for the 1.0 scenario

**State Tax Revenues in Texas for 2000 and Projected for 2040
(in 2000 Dollars) Assuming 2000 Rates, 1990-2000 Rates of Closure
Between Anglo-Black and Anglo-Hispanic Household Incomes,
and Anglo Income Levels for All Race/Ethnicity Groups***



*Projections are shown for the 1.0 scenario

The mark of a truly
educated man is to be
moved deeply by
statistics.

George Bernard Shaw

Steve Murdock
Texas State Data Center

Phone **210 – 458 - 6530**

Fax **210 – 458 - 6540**

Website **txsdc.utsa.edu**